



# SUZUKI GSX-R 1300 HAYABUSA

(2008 - 2010)

RACING SINGLE OPEN EXHAUST SYSTEM

[www.akrapovic.com](http://www.akrapovic.com)

Racing exhaust system is designed for riders who demand the most from their exhaust system in terms of both quality and performance. The header tubes are formed using HYDROFORMING technology! With Akrapovic Racing Single system you will benefit from great power increase and maximum weight savings compared to stock Suzuki exhaust system.

**PERFORMANCE**

Measurements of the Akrapovic EVOLUTION SINGLE system on the SUZUKI GSX-R 1300 HAYABUSA (without noise damper):

The system provides a linear increase throughout the entire range, and the greatest increase is at the very top of the range. We measured 188.8 HP at 10370 rpm on the rear wheel. The max. increased power is 12.1 HP at 10370 rpm. The torque curve also reflects the exhaust system upgrade. The engine is more responsive in bottom and will provide much more torque through entire rpm range.

**CONFIGURATION**

The 4-2-1 configuration of the RACING system uses stainless steel for header tubes, collector and link pipe. The muffler outer sleeve is available in either carbon-fiber or titanium, while the outlet cap is available only in carbon-fiber. The interior of the muffler is also made of titanium. All parts are connected together with sleeve joints and held together with silicon-shielded tensioning springs. The muffler is attached to the motorcycle with a carbon-fiber clamp.

	PERFORMANCE		
	stock	AKRAPOVIC	max. increased power
max. rear wheel power HP / rpm (measured on Dynojet ATV)	179.5 / 9300	188.8 / 10370	12.1 / 10370

	CONFIGURATION		
	header tubes	collector	link pipe
material	STAINLESS STEEL / TITANIUM	STAINLESS STEEL / TITANIUM	STAINLESS STEEL / TITANIUM
tube shape	CONICAL	CYLINDRICAL	CONICAL

interference crossover tubes	YES	lambda sensor	YES	
header tube inner sleeves	S.S. CNC MACHINED	header tube flanges	ALU CNC MACHINED	
header tubes - collector connection	SLEEVE JOINT + SILICON SHIELDED SPRING	collector / header tube - link pipe connection	SLEEVE JOINT + SILICON SHIELDED SPRING	
link pipe - muffler connection	SLEEVE JOINT + SILICON SHIELDED SPRING	muffler inlet cap /outlet cap	Ti / Carb.-fiber	
muffler metal interior	TITANIUM	muffler outer sleeve	Ti / Carb.-fiber	
muffler clamp	CARBON-FIBER	muffler bracket	Optional: Carb.-fiber	
muffler insert	EU	YES(track legal)	heat shield	-
	US	-	catalytic converter	-

	ADDITIONAL DATA				
	stock	AKRAPOVIC		difference	
		RACING	EVOLUTION	stock - RACING	stock - EVOLUTION
weight comparison (kg)	21.53	5.56	-	15.97	-
noise measurements (dB / rpm)	stock		AKRAPOVIC		
	91 / 4750		97.7 / 4750		
possibility of periodic service without removing A.E.S.	oil		oil filter		
	YES		YES		
legal for street use	NO				

Technical specifications of Akrapovic exhaust systems and related products subject to change without notice.



Product code: (109560) S-S13R2-RC  
(109559) S-S13R2-RT



Product code: (109560) S-S13R2-RC  
(109559) S-S13R2-RT

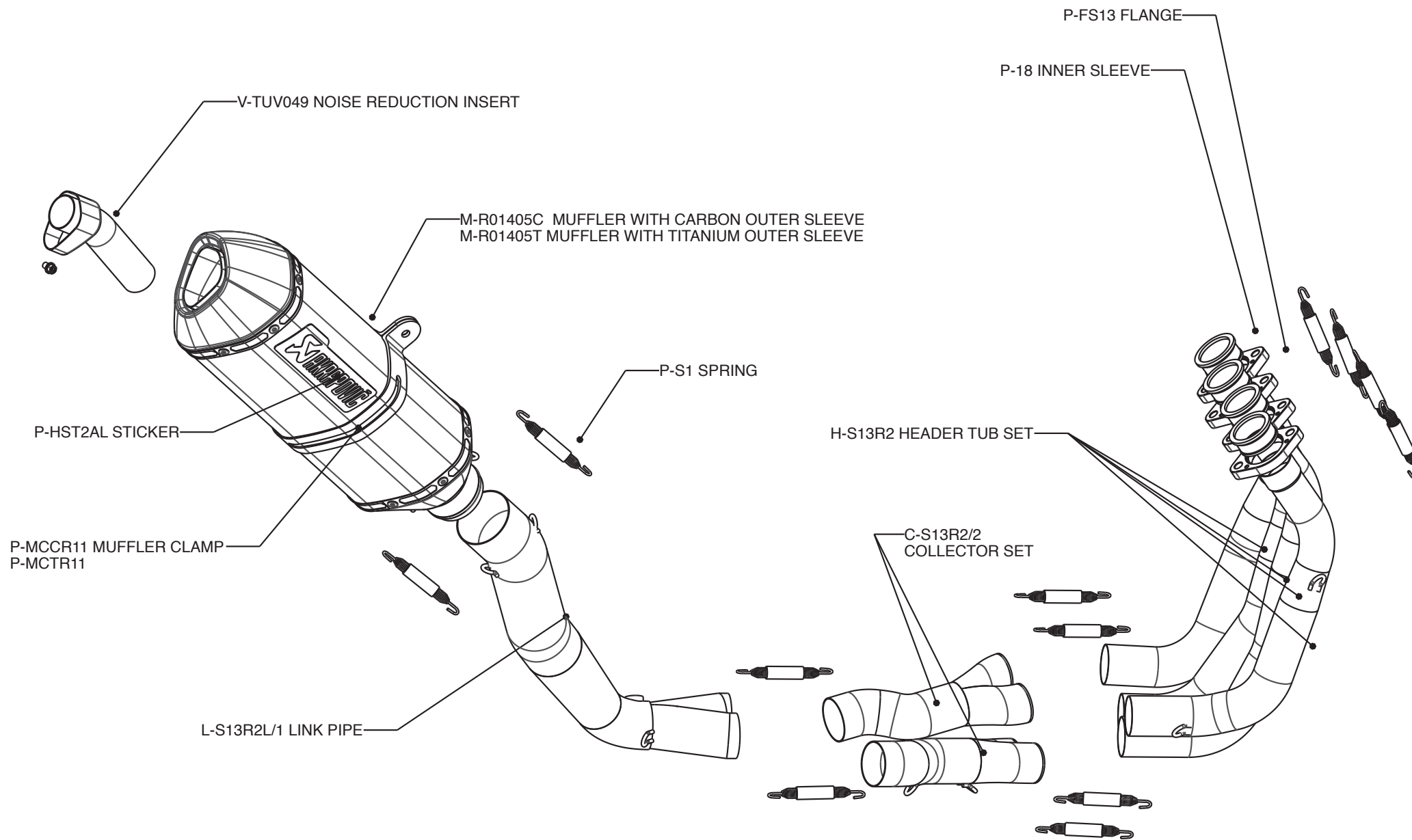
 **AKRAPOVIČ**

[www.akrapovic.com](http://www.akrapovic.com)  
Akrapovič d.d. 2008 all rights reserved





Product code: (109560) S-S13R2-RC  
(109559) S-S13R2-RT



Product code: (109560) S-S13R2-RC  
(109559) S-S13R2-RT



