



Evolution Line (Titanium)

Produkt-Code: S-D11E1-T **CARB**

22 years of exhaust manufacturing technology has gone into producing this Evolution Line exhaust, but despite this – just like Ducati in building the Panigale – the design effort Akrapovič put into making the ultimate exhaust was the most challenging the Slovenian company had ever faced. However, they have ensured that the finished product upholds the fact that Evolution Line exhausts are the finest off-the-shelf racing systems available.

Every section of the Evolution Line exhaust pipework is produced from specialist, durable, greater heat-resistant titanium alloy. The power-to-weight ratio of the 1199 Panigale increases dramatically with the fitment of the Akrapovič Evolution Line exhaust – the use of titanium alloys are not just for show and exclusivity. The complex design and routing of the exhaust system subsequently leads to lessons in precise tube forming and surgical-like TIG (Tungsten Inert Gas) welding of the complicated sections. Of course, all done by human eyes, hands and much skill.

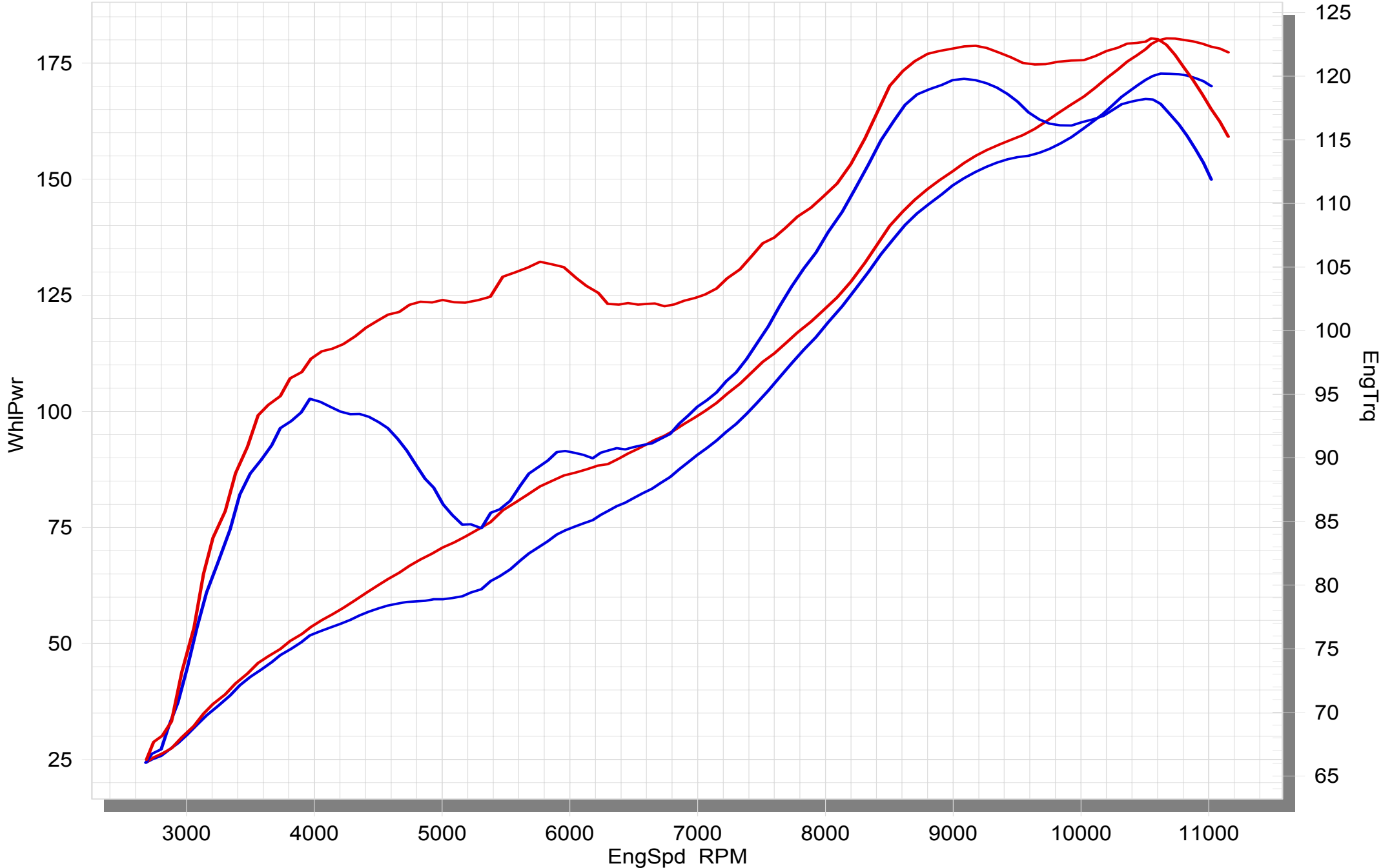
TECH. DATEN	EINHEIT	ORIGINAL	AKRAPOVIČ	MAX. WERTE
Maximale Leistung	kW	127.1 bei 10600 rpm	132.6 bei 10750 rpm	+ 9.4 bei 5150 rpm
	PS (m)	172.8 bei 10600 rpm	180.3 bei 10750 rpm	+ 12.8 bei 5150 rpm
	PS (i)	170.4 bei 10600 rpm	177.8 bei 10750 rpm	+ 12.6 bei 5150 rpm
Maximales Drehmoment	Nm	119.8 bei 9100 rpm	123 bei 10550 rpm	+ 17.9 bei 5300 rpm
	lb-ft	88.4 bei 9100 rpm	90.7 bei 10550 rpm	+ 13.2 bei 5300 rpm
Gewicht	kg	11.3	6.5	- 4.8
	lb	24.9	14.3	- 10.6
Statische Geräuschpegel	dB	105	107	+ 2
	rpm	5000	5000	0

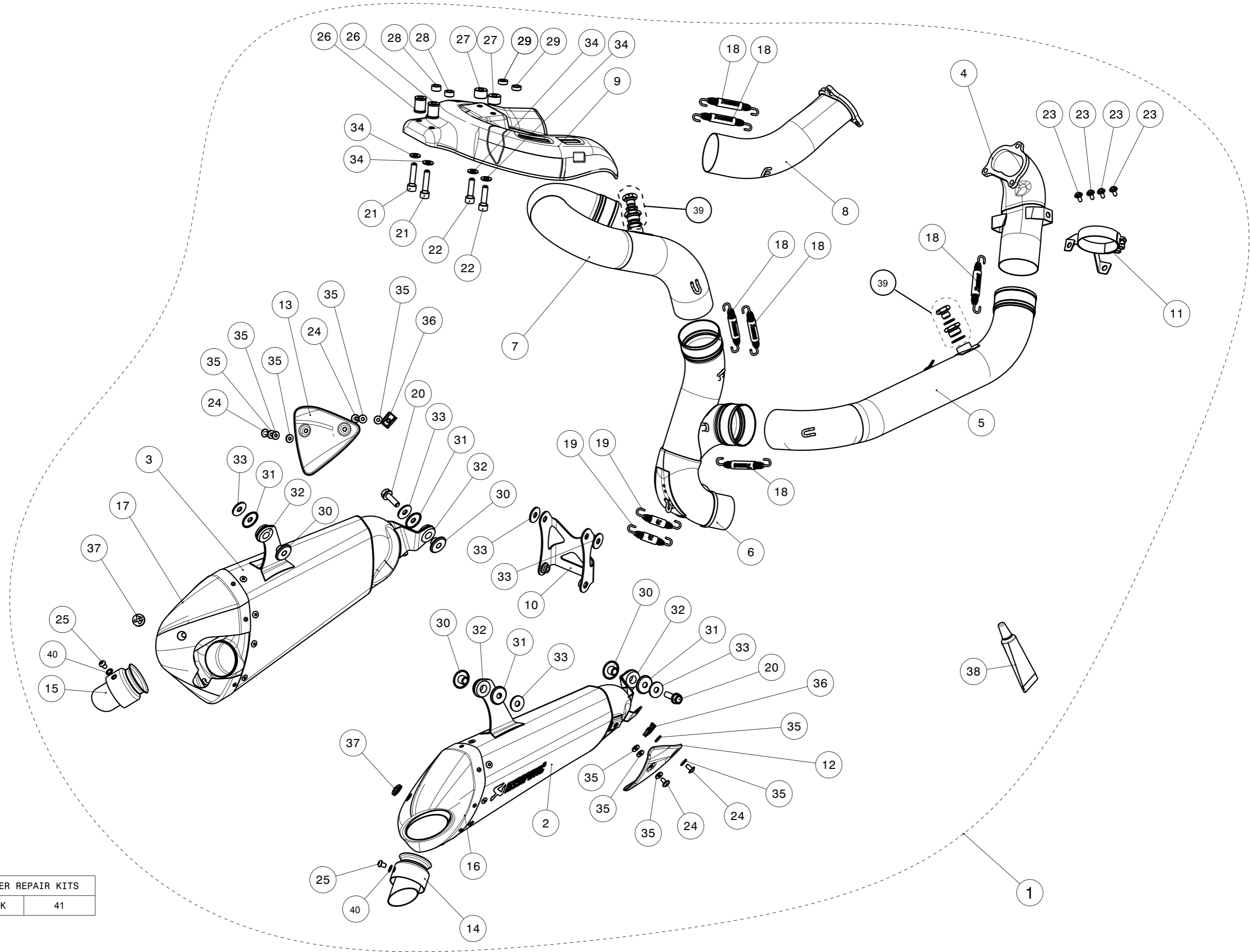
gemessen mit: Ducati 1199 Panigale S 2012

DUCATI 1199 PANIGALE S

 STOCK

 COMPLETE





MUFFLER REPAIR KITS	
REPACK	41

No.	SALES CODE	DESCRIPTION	QTY.
1	S-D11E1-T	evolution system	1
2	M-CE0106TR	muffler TI R	1
3	M-CE0106TL	muffler TI L	1
4	H-D11E1T	header TI	1
5	L-D11E1T	link pipe	1
6	C-D11ET1	collector TI	1
7	L-D11E2T	link pipe	1
8	H-D11E2T	header TI	1
9	P-HSD11R1B	heat shield CA	1
10	P-X121	bracket TI	1
11	P-R93	clamp ss	1
12	P-HSD11R1FR	heat shield CA - front right	1
13	P-HSD11R1FL	heat shield CA - front left	1
14	V-TUV138	muffler insert SS	1
15	V-TUV138/L	muffler insert SS	1
16	V-EC198	end cap CA	1
17	V-EC197	end cap CA	1
18	P-S1/2	spring	6
19	P-S2/1	spring	2
20	P-FB60	screw SS	2
21	P-FB20	bolt	2
22	P-FB84	bolt	2
23	P-FB75	bolt	4
24	P-FB38	bolt	4
25	P-FB28	bolt	2
26	P-DR77	bush AL	2
27	P-DR76	bush AL	2
28	P-DR78	bush AL	2
29	P-DR79	bush AL	2
30	P-DR37	spacer bushe AL	4
31	P-DR80	spacer bushe AL	4
32	P-GUV003	rubber insert	4
33	P-DR4	washer SS	6
34	P-DR38	washer	4

No.	SALES CODE	DESCRIPTION	QTY.
35	P-DRH2/BAR316	washer SS	10
36	P-FN1	nut	2
37	P-GUV004	rubber insert	2
38	P-HF267	loctite	1
39	P-HF852	lambda plug	2
40	P-DR18	washer SS	2
41	P-RPCK104	muffler repack kit	2