

Slip-On Line (Titan)

Produkt-Code: S-MC/TI/1 

The performance exhaust for the McLaren MP4-12C is a high-tech system crafted from a special durable and heat-resistant titanium alloy with bigger tubes and unique solutions to improve torque and power at all rpms, especially in the most-used middle range. Our uncompromising approach uses the best materials and design. Light systems save weight and lower the center of gravity, leading to better handling as well. A special coating guarantees a state-of-the-art look. The 12C with the Akrapovič Slip-On exhaust system sounds deeper in the low rpms and serves up a delicious racing sound as the revs get higher. Slip-On systems contain special sound solutions to tune the sound frequencies: every element of the system was designed for maximum sound output, and offers everything needed for pleasant cabin comfort and to make the V8 sing out for true car enthusiasts at all rpms in all gears. On top of all this, the carbon fibre tailpipes create the striking visual impression that this is no ordinary McLaren.

Cars equipped with Akrapovič exhaust systems benefit from additional performance and increased responsiveness. Significant gains in power and torque are achieved throughout the entire rpm range. All Akrapovič exhaust system measurements are made on our computer-controlled flowbenches.

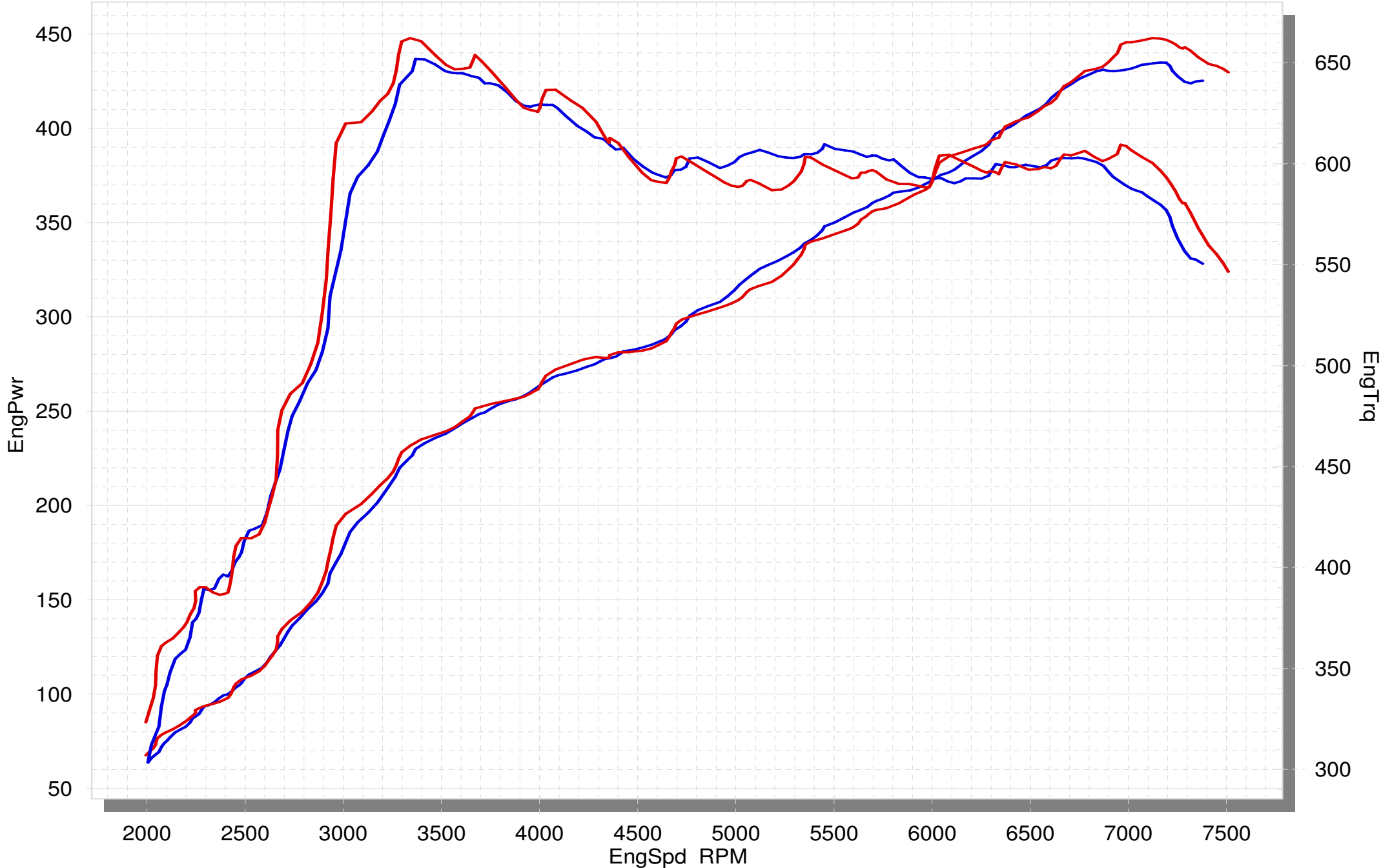
TECH. DATEN	EINHEIT	ORIGINAL	AKRAPOVIČ	MAX. WERTE
Maximale Leistung	kW	435 bei 7150 rpm	447.9 bei 7100 rpm	+ 14.5 bei 7000 rpm
	PS (m)	591.4 bei 7150 rpm	609 bei 7100 rpm	+ 19.7 bei 7000 rpm
	PS (i)	583.3 bei 7150 rpm	600.7 bei 7100 rpm	+ 19.4 bei 7000 rpm
Maximales Drehmoment	Nm	651.9 bei 3350 rpm	662.2 bei 3350 rpm	+ 27 bei 3100 rpm
	lb-ft	480.8 bei 3350 rpm	488.4 bei 3350 rpm	+ 19.9 bei 3100 rpm
Gewicht	kg	9.2	3.8	- 5.4
	lb	20.3	8.4	- 11.9
Statische Geräuschpegel	dB	100	103	+ 3
	rpm	3750	3750	0

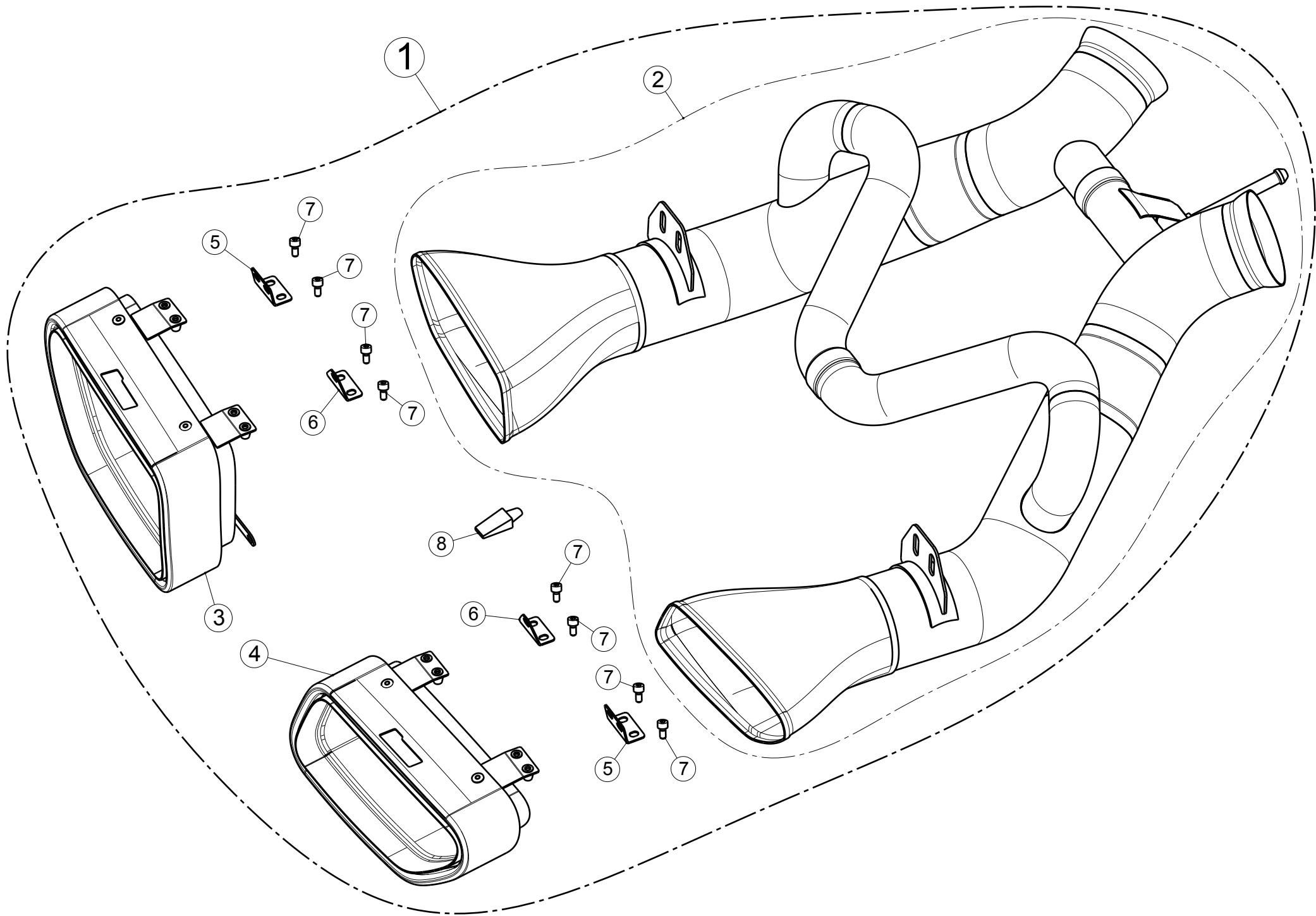
gemessen mit: McLaren 12C / 12C SPIDER 2012

MCLAREN MP4 12C

STOCK

SLIP-ON





No.	SALES CODE	DESCRIPTION	QTY.
1	S-MC/TI/1	slip on system	1
2	M-MC/T/1	muffler TI	1
3	TP-CT/24/L	tail pipe CA left	1
4	TP-CT/24/R	tail pipe CA right	1
5	P-X129	bracket	2
6	P-X128	bracket	2
7	P-FB75	bolt	8
8	P-HF113	copper paste	1