

## Slip-On Line (Titanium)

Produkt-Code: MTP-LA/TI/2 **CARB**

Following the success and experience gained from the Slip-On Line exhaust system that Akrapovič developed for the Lamborghini Gallardo, the new system for the Lamborghini Huracán takes this stunning car to new levels. Precision engineered from a high-grade titanium alloy, which is designed to significantly reduce weight and improve handling, the Slip-On Line has bigger main pipes than the standard system and a specially designed X-part (for cross-flow) in the muffler to reduce back-pressure, increasing power and torque levels right across the rev range. The unique growl from the naturally aspirated V10 engine is improved as the performance grows, delivering a distinctive note that thrills the senses, without any unwanted cabin noise. At lower revs and during cruise operation the valves are closed, producing a deeper and sharper exhaust note, but when the revs rise and the valves open, the full passionate soundtrack of the engine is released to show that the Huracán means business. This exquisite system is perfectly finished with four carbon fibre tailpipes, ensuring that this exhaust looks as good as it sounds and performs.

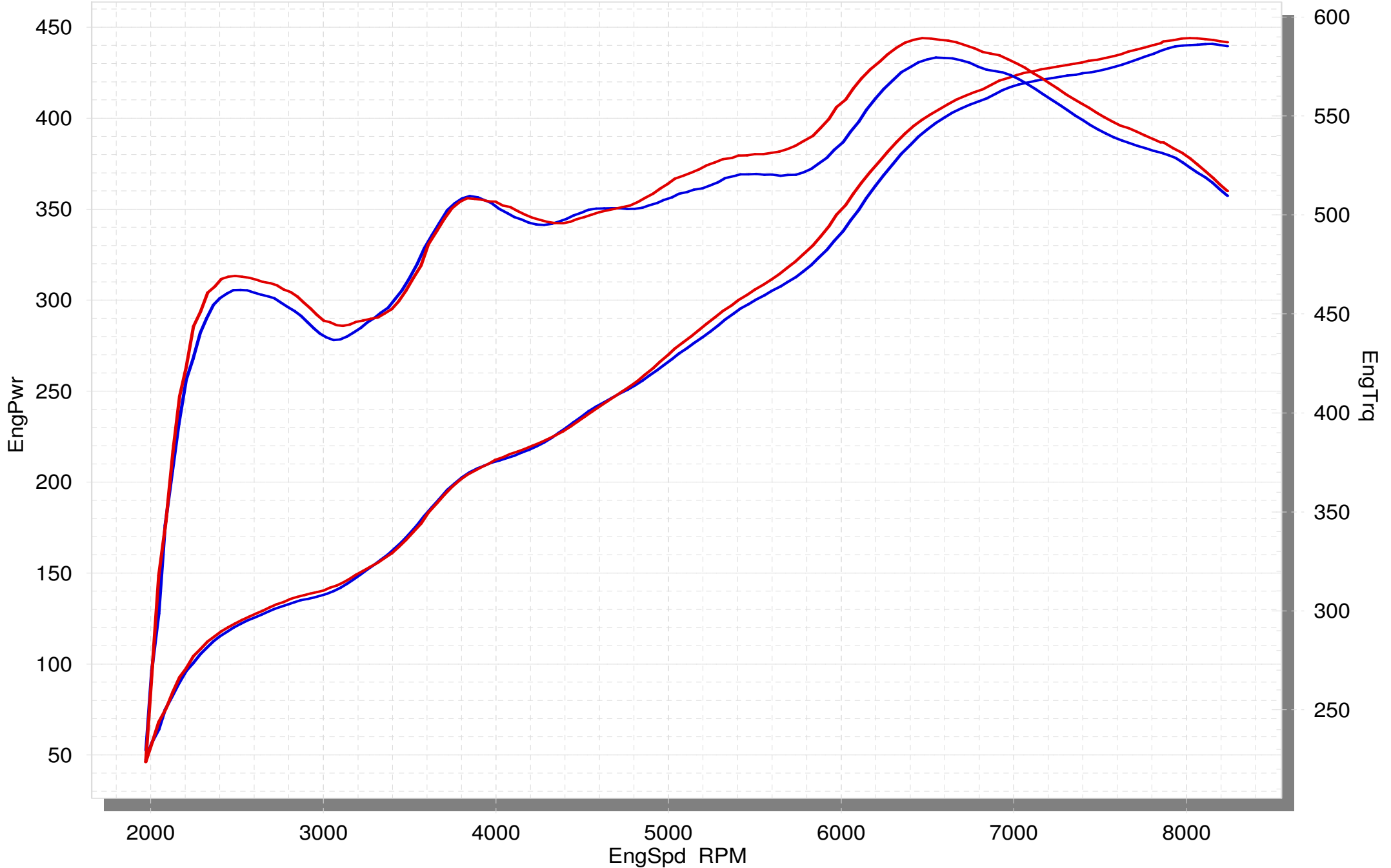
<b>TECH. DATEN</b>	<b>EINHEIT</b>	<b>ORIGINAL</b>	<b>AKRAPOVIČ</b>	<b>MAX. WERTE</b>
<b>Maximale Leistung</b>	<b>kW</b>	440.8 bei 8100 rpm	444.1 bei 8000 rpm	+ 14.3 bei 5950 rpm
	<b>PS (m)</b>	599.3 bei 8100 rpm	603.8 bei 8000 rpm	+ 19.4 bei 5950 rpm
	<b>PS (i)</b>	591.1 bei 8100 rpm	595.5 bei 8000 rpm	+ 19.1 bei 5950 rpm
<b>Maximales Drehmoment</b>	<b>Nm</b>	579.5 bei 6550 rpm	589.3 bei 6450 rpm	+ 21.7 bei 5950 rpm
	<b>lb-ft</b>	427.4 bei 6550 rpm	434.6 bei 6450 rpm	+ 16 bei 5950 rpm
<b>Gewicht</b>	<b>kg</b>	34	13.5	- 20.5
	<b>lb</b>	75	29.8	- 45.2
<b>Statische Geräuschpegel</b>	<b>dB</b>	89	99	+ 10
	<b>rpm</b>	3500	3500	0

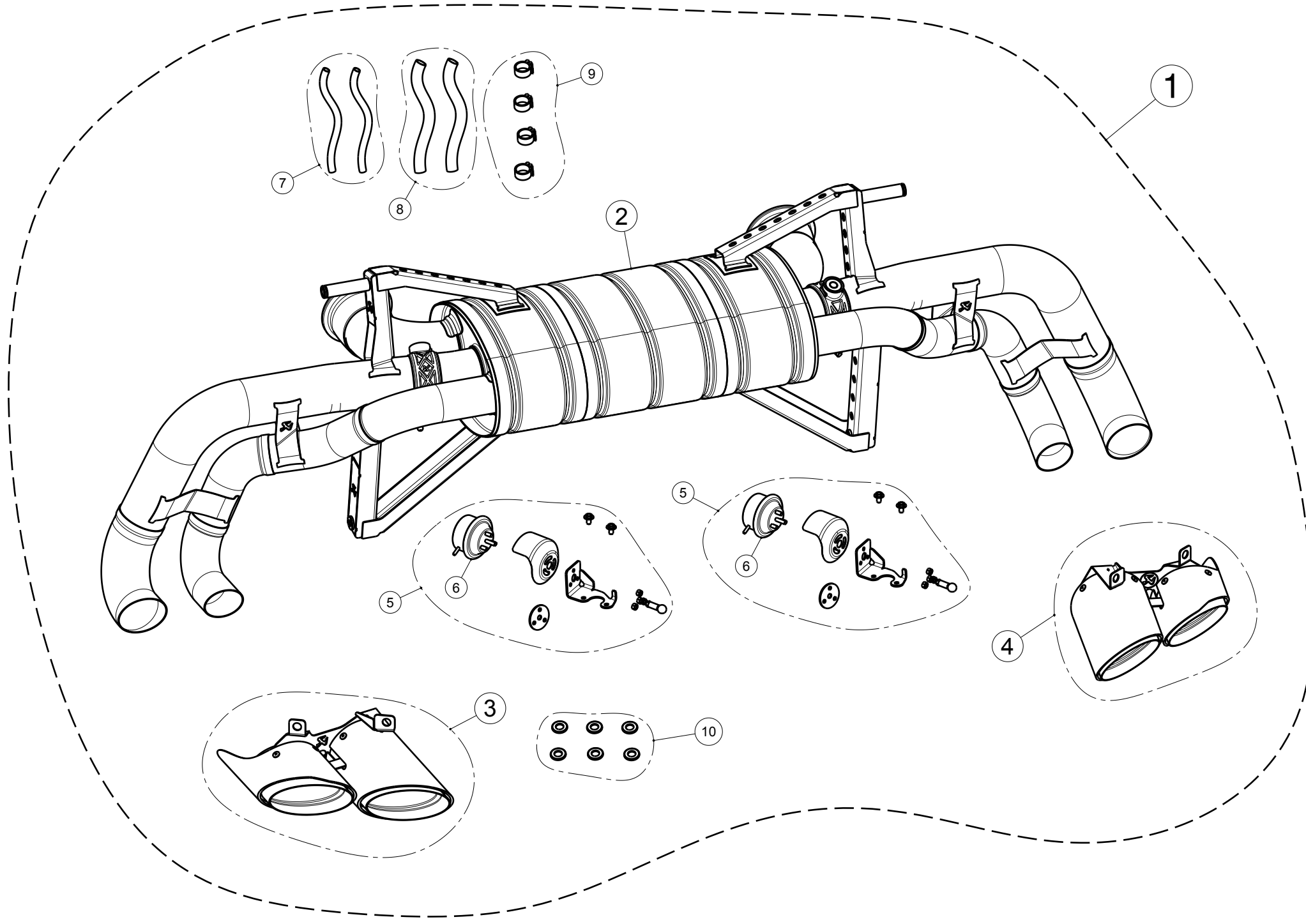
gemessen mit: Lamborghini Huracán LP 610-4 Coupé/Spyder 2014

# Lamborghini Huracan LP 610-4

STOCK

SLIP-ON





No.	SALES CODE	DESCRIPTION	QTY.
1	MTP-LA/TI/2	slip-on system	1
2	M-LA/T/6	muffler	1
3	TP-CT/31/L	tail pipe CA left	1
4	TP-CT/31/R	tail pipe CA right	1
5	P-HF906	actuator with fitting kit	2
6	P-HF851	vacuum actuator	2
7	P-HF907	fitting kit tubes	1
8	P-HF908	fitting kit insulation	1
9	P-HF909	fitting kit clamps	1
10	P-HF910	fitting kit washers	1