



Akrapovič Slip-On exhaust system for the Abarth 500/500C (1.4 16V T-Jet)

This pocket rocket of legendary fame is proof that the best things come in small packages. Its turbo engine and small external dimensions make the 500 a truly fun car to drive, and it's also suitable for a turn around the racetrack. To make it even faster, even more responsive, and with a more striking look and sound, Akrapovič has developed a completely new exhaust system for it. The Slip-On system can be purchased with a set of impressive exhaust tail pipes made from titanium or an equally impressive set made from carbon fiber. Choosing either of these sets gives the Abarth 500 a completely new look and adds power on the street. The 115 mm tail pipes will definitely stick in the memory of any driver who sees the Akrapovič 500 zoom past. This is also true of the sound; selecting the optional wireless kit for operating the exhaust valve makes the sound significantly deeper, tastefully louder, but still completely without undesirable droning. The Akrapovič engineers have found the ideal compromise once again. With the simple push of a button, the wireless kit offers a choice between normal volume and a louder sound, adding further excitement in the drive to set record times on the track. Faster times are also possible because of the power increase, which is an additional three horsepower and five Nm (four lbs-ft) of torque. The Akrapovič Slip-On system also reduces the overall weight by three kg (6 lbs.). The gas flow is optimized, the backpressure reduced, and the Abarth with the Akrapovič system is outstanding for tuning and modifications. It has more power available from around 2,500 rpm all the way to the top. These specs apply to the system with the optional wireless kit and open valves. The system without the wireless kit has a point-welded block in the link pipe that prevents bypassing the muffler. Please note: when the bypass is unblocked, the system is no longer EC Type approved. Installing the Slip-On system is simple; the system fits perfectly onto the remaining components. The Slip-On system fits the 500 and 500C versions, as well as the Esseeesse kit.

Slip-On system, EC Type approved:

- Stainless steel collector
- Stainless steel link pipe
- Stainless steel system with muffler

Hard facts:*

- Plus 3 HP (at 4,100 rpm)
- Plus 5 Nm / 4 lbs-ft of torque (at 3,860 rpm)
- 3 kg / 6 lbs. lighter than stock

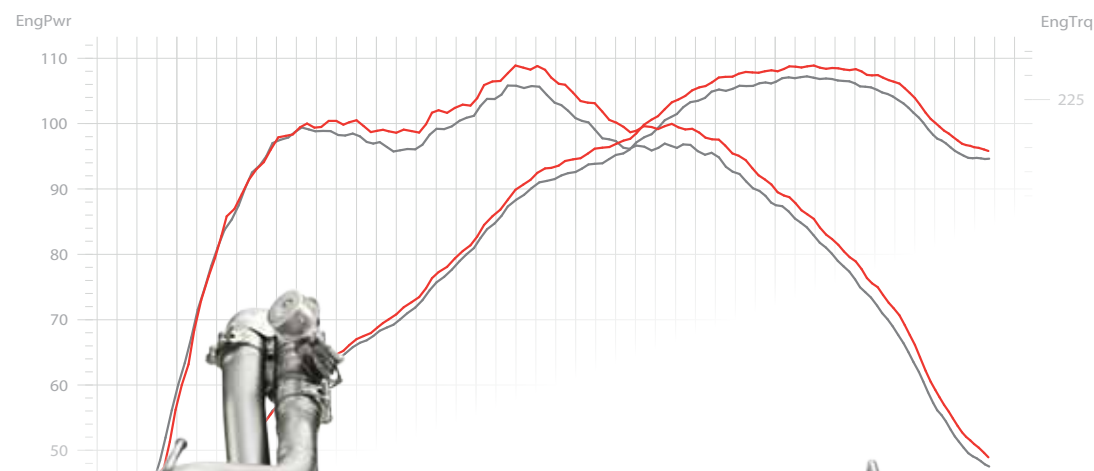
Tail pipes:

- Titanium tail pipe set
- Carbon fiber tail pipe set

Optional:

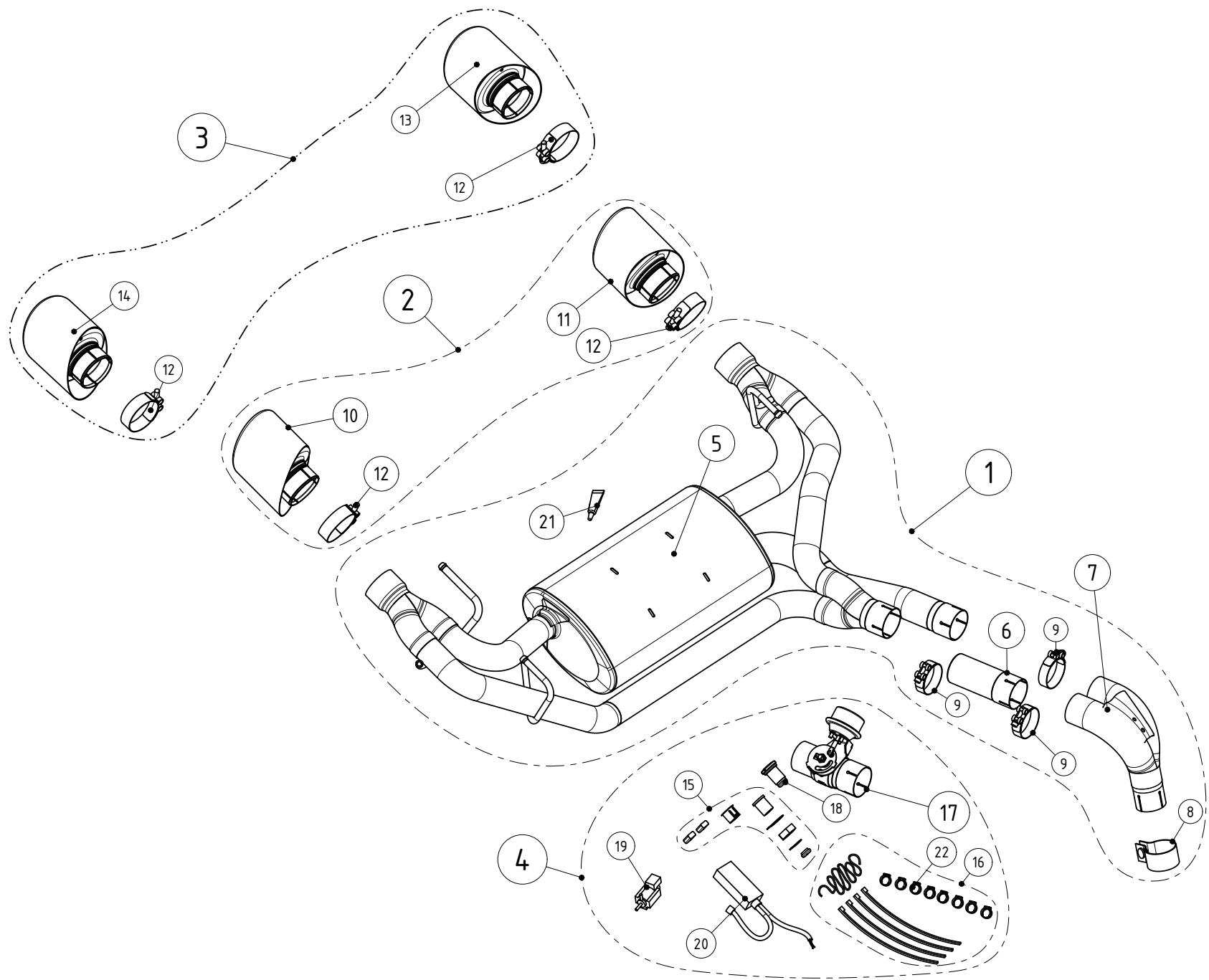
- Wireless kit for exhaust valve

* Slip-On with optional wireless kit



Slip-On system

Stainless steel, 3 HP plus, 5 Nm plus, 3 kg lighter



No.	SALES CODE	DESCRIPTION	QTY.
1	M-FI/SS/1H	slip on system	1
2	TP-T/S/2	tail pipe set TI	1
3	TP-CS/1	tail pipe set CA	1
4	P-HF573	fitting kit	1
5	M-FI/SS/2H	muffler	1
6	L-FI/SS/1	link pipe SS	1
7	CO-FI/SS/1	collector SS	1
8	P-R55	clamp SS	1
9	P-R39	clamp SS	3
10	TP-T/S/6	tail pipe TI	1
11	TP-T/S/7	tail pipe TI	1
12	P-R64	clamp SS	2
13	TP-CS/2	tail pipe CA	1
14	TP-CS/3	tail pipe CA	1
15	P-HF450	keyfob assembly kit	1
16	P-HF567	fitting kit	1
17	P-HF704	link pipe SS	1
18	P-HF455	keyfob	1
19	P-HF452	fitting kit	1
20	P-HF587	fitting kit	1
21	P-HF113	copper paste	1
22	P-R85	clamp SS - vacuum tube	8