



YAMAHA YZF R6

(2008)

RACING & EVOLUTION EXHAUST SYSTEM

www.akrapovic.net

Akrapovic Racing and Evolution systems are designed for racing-oriented riders who demand maximum performance from their motorcycle. Both systems are significantly lighter if compared to stock exhaust system and feature exceptional production quality, hi-tech materials and of course increased engine performance. The Akrapovic Racing and Evolution systems were developed to complement the racing character of the R6. Both systems are not street legal and are designed for racing purpose only.

PERFORMANCE

Measurements of the Akrapovic EVOLUTION system on the YAMAHA YZF R6 (without muffler insert):

Power & Torque: The power increase with the Akrapovic system is substantial, and can be seen from 7000 rpm right to the top of the range. At 15000 rpm we measured 121.1 HP, with max. increased power of 5 HP at 8600 rpm. The system's effect on the torque curve is similar to the power curve. The main increase starts at around 6500 rpm and continues right into the over-rev range.

CONFIGURATION

The Akrapovic Racing and Evolution systems are composed of conical header tubes, conical collectors and a conical link pipe. They differ only in their selection of tubing materials. The Racing uses stainless steel tubes, and the Evolution titanium. The tubes are attached to each other with sleeve joints secured with silicon-shielded springs. The muffler for both systems is the HEXAGONAL design, with a titanium inlet cap, perforated inner sleeve and outer sleeve, and a carbon-fiber outlet cap. Muffler outer sleeve is available in titanium or carbon-fiber. It is attached to the bike using an Akrapovic carbon-fiber clamp. The systems are also equipped with interference crossover tubes between the two collectors. They also come with attachments for mounting a lambda sensor.

Technical specifications of Akrapovic exhaust systems and related products subject to change without notice.

| | PERFORMANCE | | |
|-------------------------------------------------------------------------------|---------------|---------------|----------------------|
| | stock | AKRAPOVIC | max. increased power |
| max. rear wheel power HP / rpm <small>(measured on Dynojet ATV)</small> | 117.5 / 14900 | 121.1 / 15000 | 5 / 8600 |

| | CONFIGURATION | | |
|------------|--------------------------------|--------------------------------|--------------------------------|
| | header tubes | collector | link pipe |
| material | TITANIUM / STAINLESS STEEL/ | TITANIUM / STAINLESS STEEL/ | TITANIUM / STAINLESS STEEL/ |
| tube shape | CONICAL | CONICAL | CONICAL |

| | | | | |
|-------------------------------------|----------------------------------------|------------------------------------------------|----------------------------------------|----|
| interference crossover tubes | YES 2x(headers+kolektor) | lambda sensor | YES | |
| header tube inner sleeves | S.S. CNC machined | header tube flanges | ALU CNC machined | |
| header tubes - collector connection | SLEEVE JOINT + SILICON SHIELDED SPRING | collector / header tube - link pipe connection | SLEEVE JOINT + SILICON SHIELDED SPRING | |
| link pipe - muffler connection | SLEEVE JOINT + SILICON SHIELDED SPRING | muffler inlet cap /outlet cap | S.S. - Carb. \ Ti | |
| muffler metal interior | TITANIUM | muffler outer sleeve | TITANIUM | |
| muffler clamp | CARBON-FIBER ROAD | muffler bracket | - | |
| muffler insert | EU | YES | heat shield | - |
| | US | - | catalytic converter | NO |

| | ADDITIONAL DATA | | | | |
|------------------------|-----------------|-----------|-----------|----------------|-------------------|
| | stock | AKRAPOVIC | | difference | |
| | | racing | evolution | stock - racing | stock - evolution |
| weight comparison (kg) | 9.99 | 4.41 | 3.33 | 5.58 | 6.66 |

| | | |
|---------------------------------------------------------|-----------|------------|
| noise measurements (dB / rpm) | stock | AKRAPOVIC |
| | 97 / 7250 | 102 / 7250 |
| possibility of periodic service without removing A.E.S. | oil | oil filter |
| | YES | YES |
| legal for street use | NO | |

Product code: (108924) S-Y6R7-ZC, (108923) S-Y6R7-ZT Racing
 (108926) S-Y6RFT7TL-ZC, (108925) S-Y6RFT7TL-ZT Evolution
 (109031) S-Y6EFT7TL-ZC, (109030) S-Y6EFT7TL-ZT Evolution KIT



Product code:

(108924) S-Y6R7-ZC, (108923) S-Y6R7-ZT Racing
(108926) S-Y6RFT7TL-ZC, (108925) S-Y6RFT7TL-ZT Evolution
(109031) S-Y6EFT7TL-ZC, (109030) S-Y6EFT7TL-ZT Evolution KIT



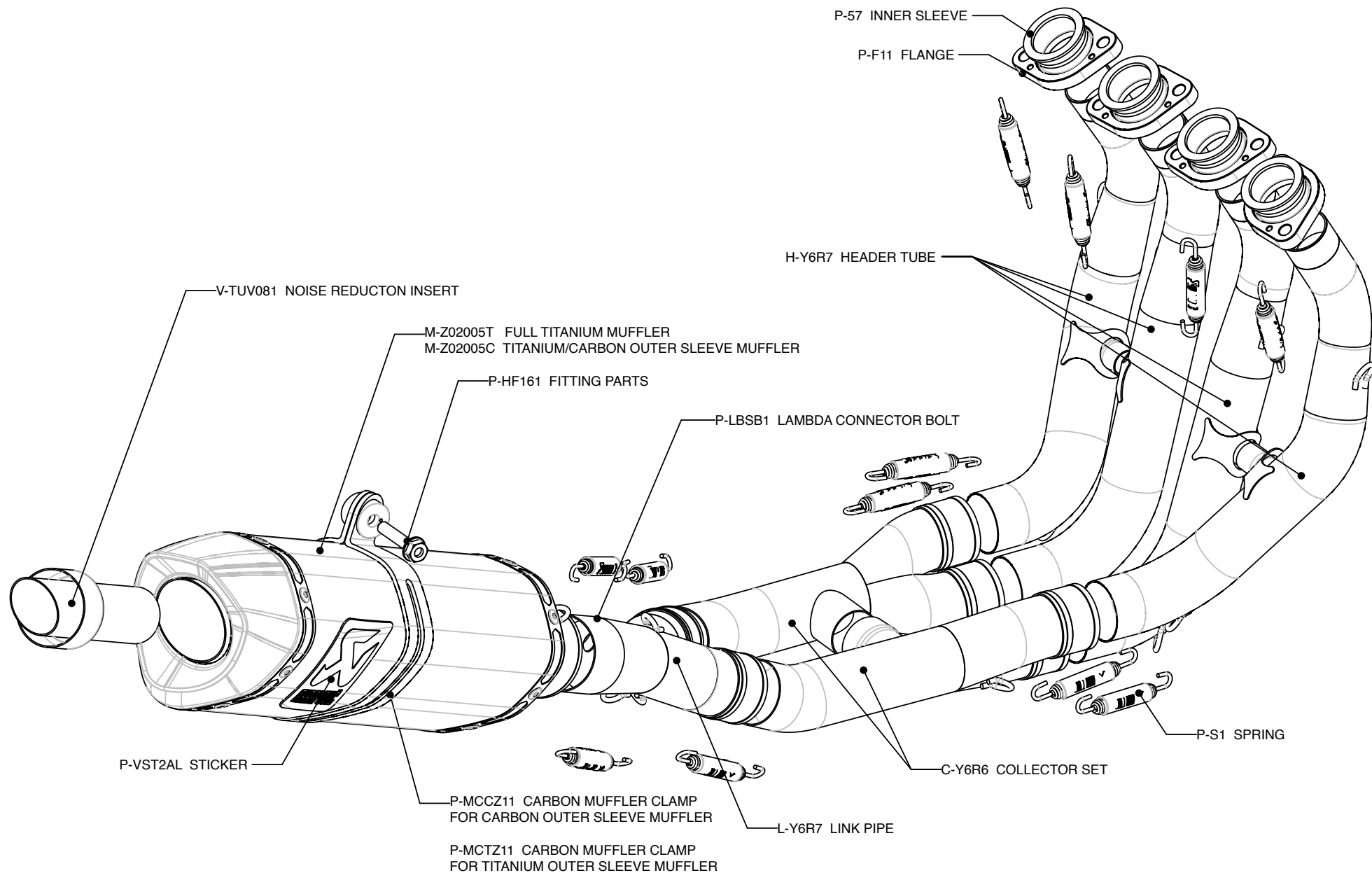
Product code:

(108924) S-Y6R7-ZC, (108923) S-Y6R7-ZT Racing
(108926) S-Y6RFT7TL-ZC, (108925) S-Y6RFT7TL-ZT Evolution
(109031) S-Y6EFT7TL-ZC, (109030) S-Y6EFT7TL-ZT Evolution KIT



Product code:

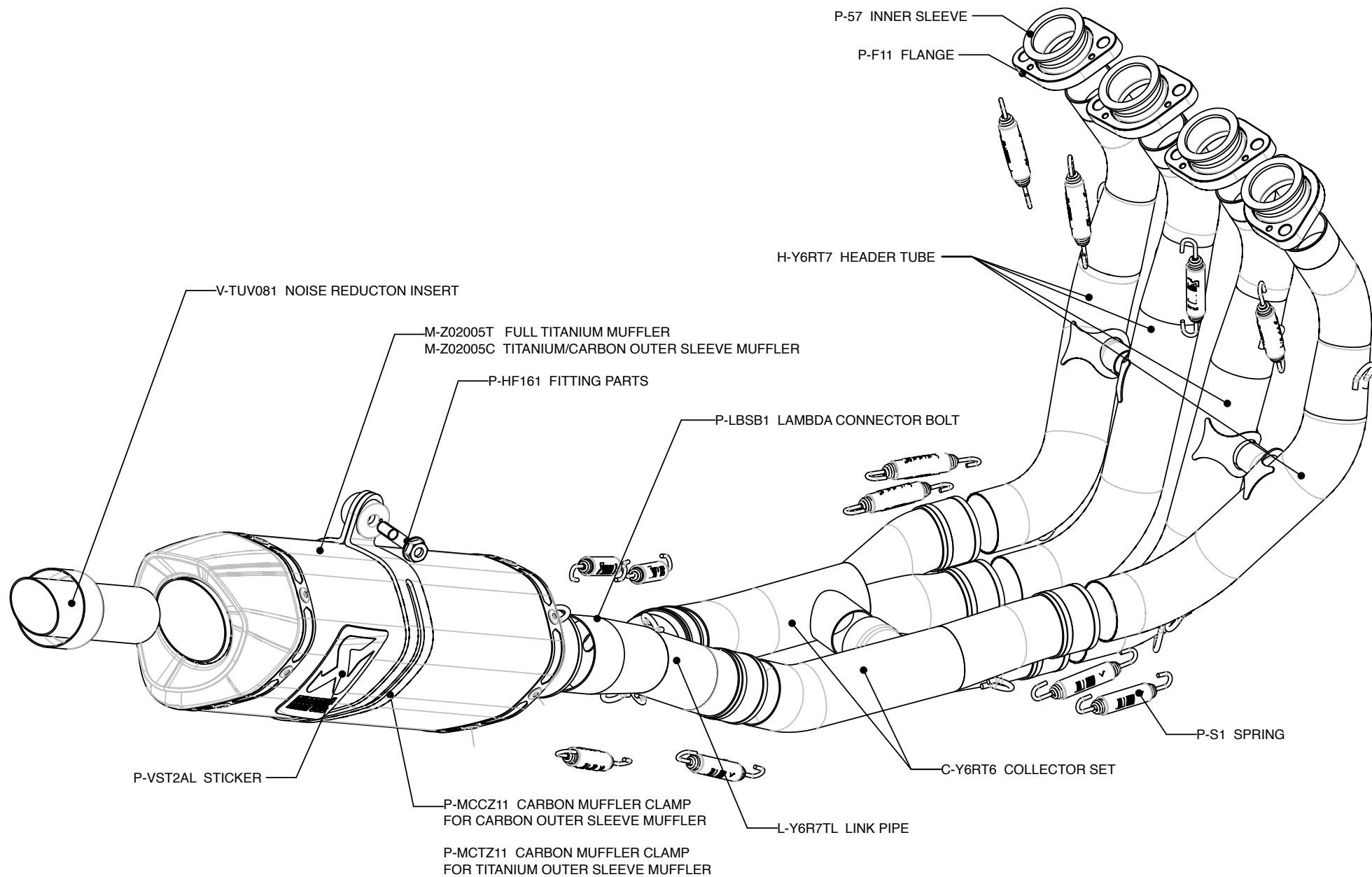
(108924) S-Y6R7-ZC, (108923) S-Y6R7-ZT Racing
(108926) S-Y6RFT7TL-ZC, (108925) S-Y6RFT7TL-ZT Evolution
(109031) S-Y6EFT7TL-ZC, (109030) S-Y6EFT7TL-ZT Evolution KIT



Product code:

(108924) S-Y6R7-ZC, (108923) S-Y6R7-ZT Racing
 (108926) S-Y6RFT7TL-ZC, (108925) S-Y6RFT7TL-ZT Evolution
 (109031) S-Y6EFT7TL-ZC, (109030) S-Y6EFT7TL-ZT Evolution KIT





Product code:

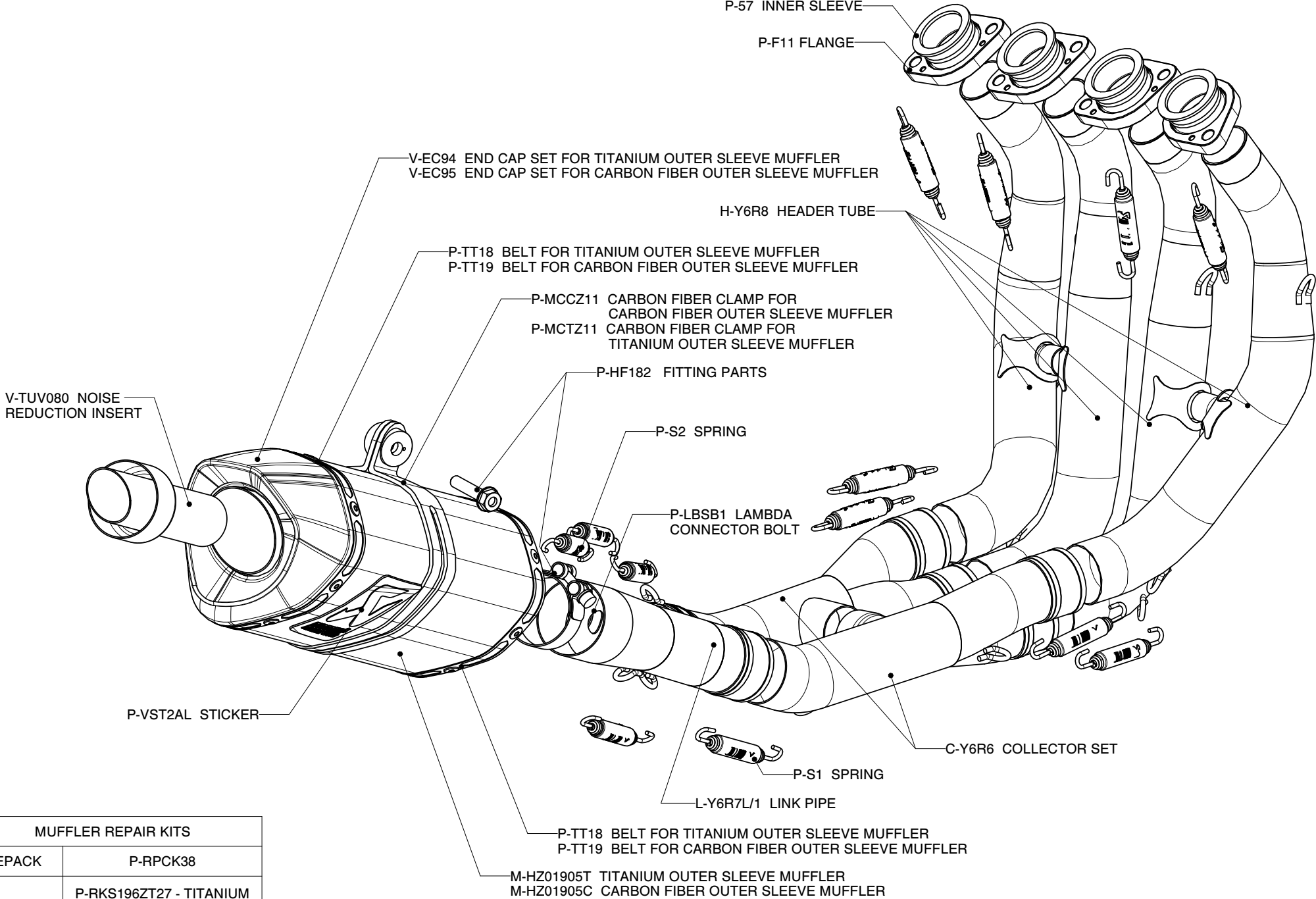
(108924) S-Y6R7-ZC, (108923) S-Y6R7-ZT Racing
 (108926) S-Y6RFT7TL-ZC, (108925) S-Y6RFT7TL-ZT Evolution
 (109031) S-Y6EFT7TL-ZC, (109030) S-Y6EFT7TL-ZT Evolution KIT



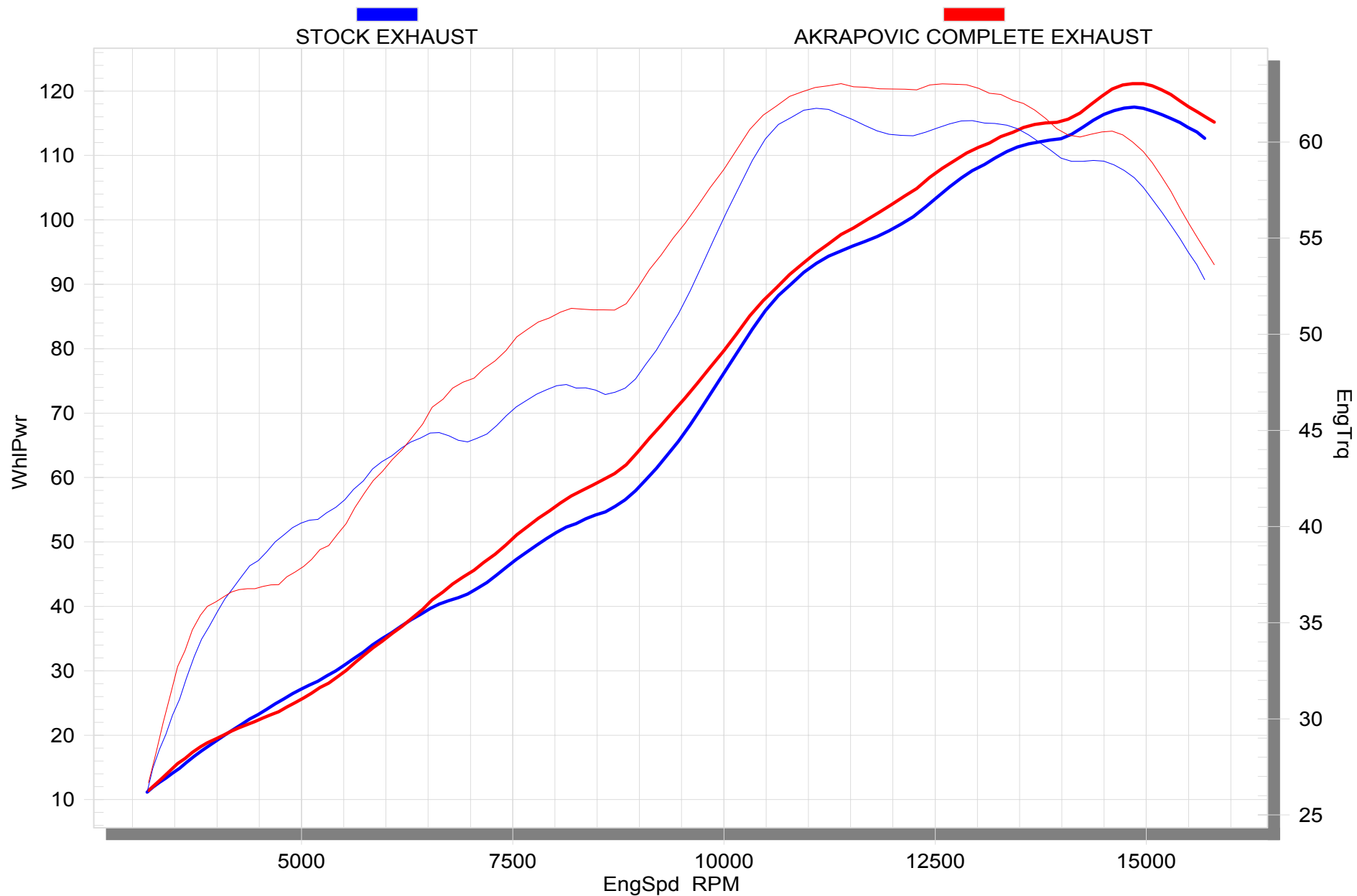
Yamaha YZF R6, Complete exhaust system / RACING LINE tube set with Street legal SLIP-ON Mufflers

Product code: S-Y6R7-ZC/1

S-Y6R7-ZT/1



| MUFFLER REPAIR KITS | |
|---------------------|-------------------------|
| REPACK | P-RPCK38 |
| SLEEVE | P-RKS196ZT27 - TITANIUM |
| | P-RKS195ZC27 - CARBON |



Product code:

(108924) S-Y6R7-ZC, (108923) S-Y6R7-ZT Racing
 (108926) S-Y6RFT7TL-ZC, (108925) S-Y6RFT7TL-ZT Evolution
 (109031) S-Y6EFT7TL-ZC, (109030) S-Y6EFT7TL-ZT Evolution KIT

