



Kawasaki ZX 6 R 636 (2003)

Slip-on Exhaust System

Akrapovic Slip-On Exhaust System

for the Kawasaki ZX 6 R 636 (2003)

The Kawasaki ZX 6R 636 for 2003 is a completely new bike. Its exterior, frame and other component parts have been thoroughly redesigned, while the only part similar to its predecessor is the engine. Its engine is different from the engine for the ZX 6 RR, which due to the racing rules is restricted in terms of displacement, while the external design is identical. The ZX 6 R 636 is a bike worth riding.

GOAL

At Akrapovic, we generally develop several lines of exhaust systems for motorcycles of a specific character. This Kawasaki is no exception, as we have developed complete Racing and Evolution exhaust systems, as well as a SLIP-ON partial replacement system. The Akrapovic SLIP-ON system is intended for riders who do not require extreme performance at the absolute racing limit, but are looking to upgrade their exhaust system without making major modifications to their bike.

ABOUT AKRAPOVIC SLIP-ON SYSTEMS

The Akrapovic SLIP-ON system for the Kawasaki ZX 6 R is composed of two independent units – the muffler and the link pipe. The link pipe is cylindrical in shape, made of high-quality stainless steel, and as an option is also available in titanium. The link pipe is attached to the stock header assembly and the muffler using free-floating connections. The connection to the header assembly is fastened using a metal clamp which is a component part of the Akrapovic SLIP-ON kit, while the connection with the muffler is secured using high-quality silicon-shielded springs.

The muffler is the familiar Akrapovic oval, which fits beautifully into the lines of the Kawasaki. Two versions of the outer sleeve are available. The checkered pattern of carbon-fiber will appeal to the more racing oriented rider, while the refined sheen of titanium will give the bike a more elegant look. In either case

the choice is purely aesthetic; the performance is identical. Even the sound is the same. The muffler is attached to the motorcycle using the renowned Akrapovic carbon-fiber clamp.

NOTE:

When installing the carbon-fiber clamp onto the stock chassis hanging bracket, bear in mind the correct orientation – right offset of the carbon-fiber clamp viewed from the rear of the bike. SEE INSTRUCTIONS!

The Akrapovic SLIP-ON exhaust system also offers you considerable weight savings. In comparison to the stock system it is over 60% lighter, i.e. 3.69 kg.

With a relatively simple procedure you get a couple extra horsepower, enrich the sound of the engine and give the rear end of the bike a major face-lift. The Akrapovic SLIP-ON system demands very little but pays you back in style! Measurements of the Akrapovic SLIP-ON system on the Kawasaki ZX 6 R:

•power:

The utility of the Akrapovic SLIP-ON system for everyday riding and its wide range of usable operation can readily be seen from the power curve. It follows the same angle as the stock curve, but at higher power. The increase over the stock curve begins at 5200 rpm and continues into the overrev range. At 12900 rpm it delivers 110.3 HP to the rear wheel.

•torque:

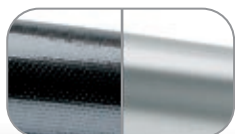
Your bike will also deliver a more comfortable ride, as the torque curve with our exhaust system follows the power curve and demonstrates its utility. The increase in torque begins at 5000 rpm and remains higher to the top of the rpm range.

	stock	AKRAPOVIC		difference	
		S.S.	titanium	stock - S.S.	stock - titanium
weight comparison	5.86 kg	2.17 kg	-	3.69 kg	-
max. rear wheel power	107.8 / 12700 RPM	110.3 HP / 12900 RPM		2.8 HP / 13000 RPM*	
noise measurement	95 db / 6500 RPM	96.5 db / 6500 RPM		1.5 db / 6500RPM	
legal for street use	NO				

*MAXIMUM MEASURED POWER DIFFERENCE

Technical specifications of Akrapovic exhaust systems and related products subject to change without notice.

Akrapovic Slip-On Exhaust System for the Kawasaki ZX 6 R 636 (2003)



The outer sleeve is available in carbon-fiber or titanium



Link pipe is made of stainless steel or sandblasted titanium (optional)



CARBON-FIBER MUFFLER CLAMP

Road Program

Product code: S-K6SO2-C, S-K6SO2-T, S-K6SO2T-C, S-K6SO2T-T

Akrapovic Slip-On Exhaust System for the Kawasaki ZX 6 R 636 (2003)



Akrapovic Exhaust System Technology copyright 2003, all rights reserved

Road
Program

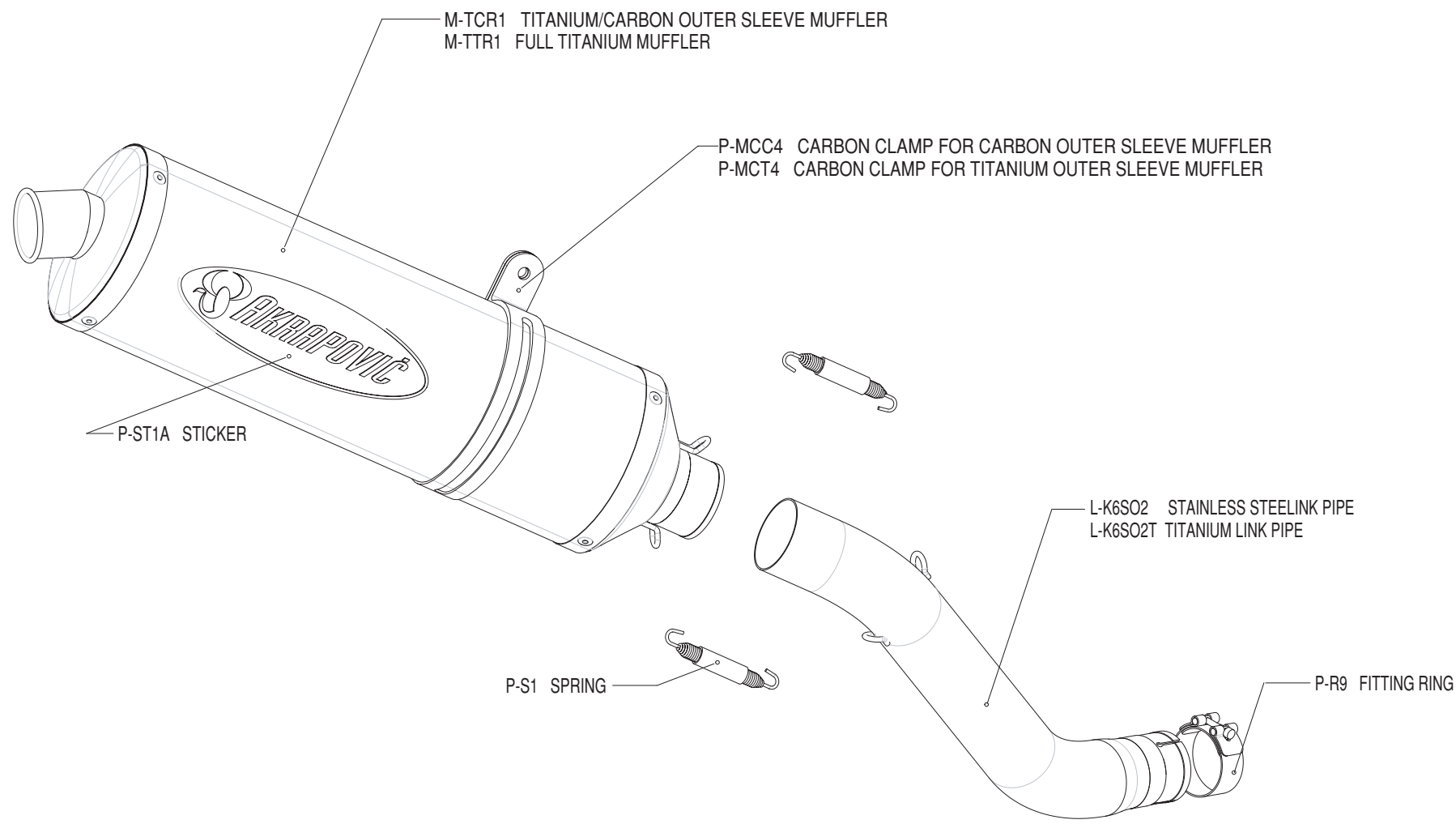
Akrapovic Slip-On Exhaust System for the Kawasaki ZX 6 R 636 (2003)



Akrapovic Exhaust System Technology copyright 2003, all rights reserved

Road Program

Akrapovic Slip-On Exhaust System for the Kawasaki ZX 6 R 636 (2003)

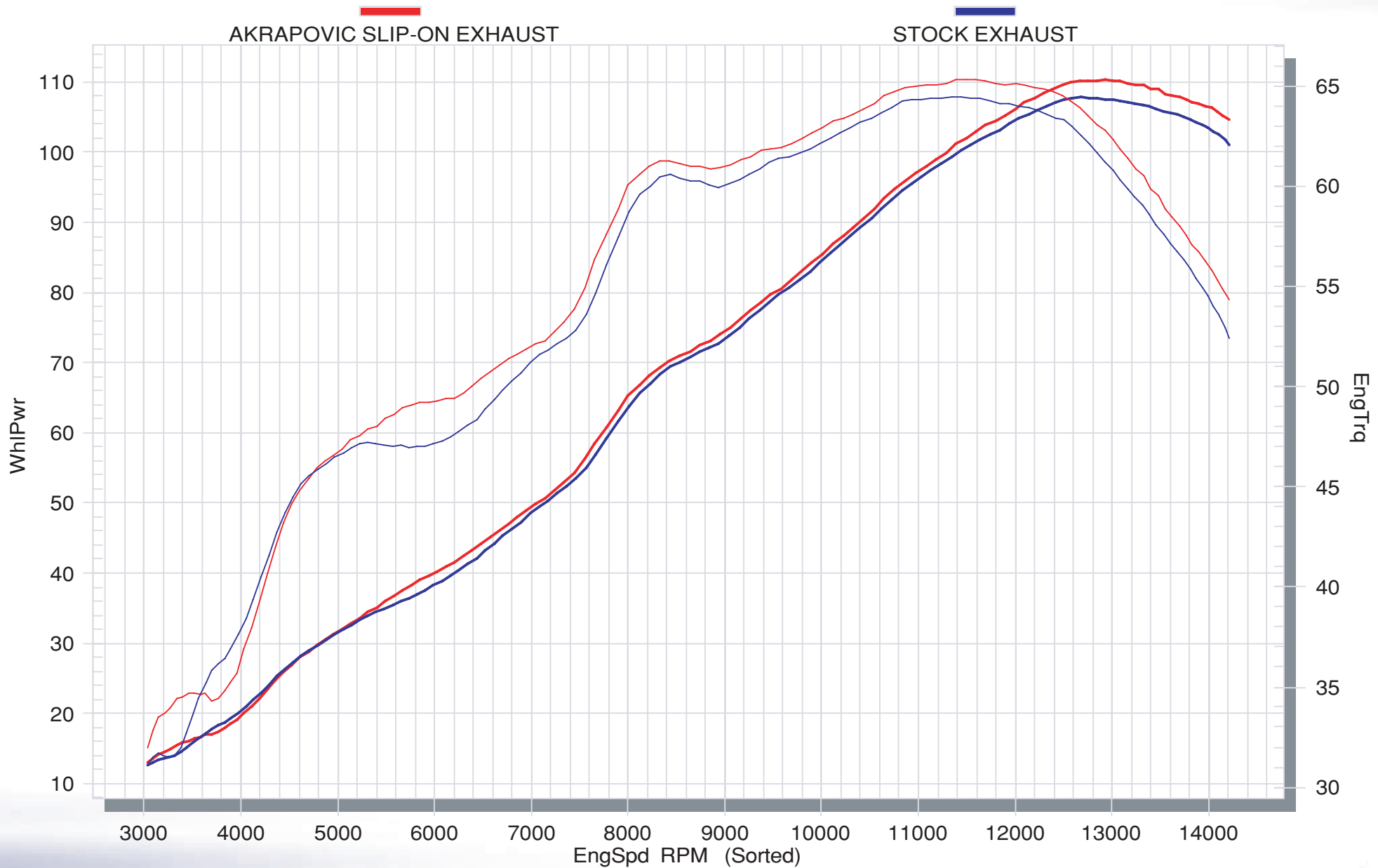


Road Program



Akrapovic Exhaust System Technology copyright 2003, all rights reserved

Akrapovic Slip-On Exhaust System for the Kawasaki ZX 6 R 636 (2003)



Akrapovic Exhaust System Technology copyright 2003, all rights reserved

Road Program

