



Kawasaki ZX 10 R (2004, 2005)

Racing & Evolution Exhaust System

Akrapovic Racing & Evolution Exhaust System

for the Kawasaki ZX 10 R (2004, 2005)

Akrapovic **HYDROFORMING** RACING and EVOLUTION exhaust systems for the Kawasaki ZX 10 R represent the beginning of a new direction in development and materials forming at our company. These systems are also the flagships of the Akrapovic production range. They offer the kind of performance which great riders of Supersport bikes like the ZX will appreciate. Every thousandth counts on the track, and these systems will definitely give you a few extra. State-of-the-art materials, high-quality production and the company's racing experience pay off on the bottom line. The Kawasaki engine with an Akrapovic exhaust puts out an incredible 165.5 HP at 11900 rpm. The power increase over the stock curve is also incredible, a full 11.2 HP at 12500 rpm. And we shouldn't forget to mention the renown of the Akrapovic name, which is increasing every year through our cooperation with world factory and private racing teams. The tubes materials for the RACING and EVOLUTION 1 systems are different; the RACING uses stainless steel, while the EVOLUTION 1 uses titanium.

NOTE1: We have also developed an Akrapovic EVOLUTION 2 exhaust system for the Kawasaki ZX 10R, which is intended only for races and championships which allow louder exhaust systems - 107 Db. The EVOLUTION 2 differs from the EVOLUTION 1 and RACING systems in the design of the muffler. The muffler is shorter and louder than the muffler for the EVOLUTION 1 and RACING systems. The Akrapovic carbon-fiber bracket is mandatory (instead of optional as for the RACING and EVOLUTION 1). *The EVOLUTION 2 is only suitable for certain types of competition!*

NOTE2: Racing, Evolution, and Evolution 2 systems with the HEXAGONAL muffler are also available for the 2004-2005 Kawasaki ZX 10R. Performance is identical to the oval muffler.

PERFORMANCE

Measurements of the Akrapovic EVOLUTION 1 system on the KAWASAKI ZX 10 R:

Power: the real increase with the Akrapovic EVOLUTION 1 system starts at 5000 rpm. The curve is linear from that point onward, and the increase leads up to around 12500 rpm, where the max. increased power is obtained at 11.2 HP. Below 5000 rpm the character of the power curve is slightly different, but this does not affect the smoothness of the ride at low revs. The character and purpose of the EVOLUTION 1 system is clear: performance at the racing end of the range, intended for experienced riders. The max. power of 165.5 HP is registered at 11900 rpm.

Torque: the torque curve is similar to the power curve. Up to 5000 rpm the torque curve moves opposite to the stock curve, while above 5000 rpm there is a huge increase in torque with the Akrapovic EVOLUTION 1 system.

CONFIGURATION

At Akrapovic we have introduced **HYDROFORMING**, a tube-forming technology using water pressure. The header tubes for the Kawasaki ZX 10 are formed using this technology, which give this bike better exhaust gas flow characteristics than previously obtainable. The header tubes lead into a double collector which is attached to the link pipe. The link pipe for the ZX is conical, with a double input to match the double collector. The tubes for the EVOLUTION 1 system are made of titanium, and for the RACING out of stainless steel. All joints are free-floating, secured with silicon-shielded tensioning springs. The muffler is the same for both systems, and is available with either a titanium or carbon-fiber outer sleeve. All metal parts on the interior of the system are made of titanium. A carbon-fiber muffler bracket is also available, which carries the muffler in a slightly higher position.

	PERFORMANCE		
	stock	AKRAPOVIC	max. increased power
max. rear wheel power HP / rpm (measured on SuperFlow Cyle Dyn)	158.4 / 11880	165.5 / 11900	11.2 / 12500

	CONFIGURATION		
	header tubes	collector	link pipe
material	TITANIUM (Evolution 1) STAINLESS STEEL (Racing)	TITANIUM (Evolution 1) STAINLESS STEEL (Racing)	TITANIUM (Evolution 1) STAINLESS STEEL (Racing)
tube shape	HYDROFORMING	CYLINDRICAL	CONICAL

interference crossover tubes	YES	lambda sensor	YES	
header tube inner sleeves	S.S. CNC MACHINED	header tube flanges	ALU CNC MACHINED	
header tubes - collector connection	SLEEVE JOINT + SILICON SHIELDED SPRING	collector / header tube - link pipe connection	SLEEVE JOINT + SILICON SHIELDED SPRING	
link pipe - muffler connection	FREE-FLOATING + SILICON SHIELDED SPRING	muffler inlet cap / outlet cap	TITANIUM / TITANIUM, CARBON-FIBER (hexagonal)	
muffler metal interior	TITANIUM	muffler outer sleeve	TITANIUM/ CARBON FIBER	
muffler clamp	CARBON-FIBER ROAD	muffler bracket	CARBON-FIBER (optional)	
muffler insert	EU	-	heat shield	-
	US	-	catalytic converter	-

	ADDITIONAL DATA				
	stock	AKRAPOVIC		difference	
		RACING	EVOLUTION	STOCK - RACING	STOCK - EVOLUTION
weight comparison (kg)	6.28	4.66	3.96	1.62	2.32
noise measurements (dB / rpm)	stock		AKRAPOVIC		
	95.3 / 5800		101.3 / 5800		
possibility of periodic service without removing A.E.S.	oil		oil filter		
	YES		YES		
legal for street use	NO / YES (street legal version)				

Technical specifications of Akrapovic exhaust systems and related products subject to change without notice.

Product code: 102519 (S-K10R2L-C), 102520 (S-K10R2L-T) racing; 105444 (S-K10R2L-ZT), 105445 (S-K10R2L-ZC) racing hexagonal
102515 (S-K10RFT2TL-C), 102497 (S-K10RFT2TL-T) evolution; 105446 (S-K10RFT2TL-ZT), 105447 (S-K10RFT2TL-ZC) evolution hexagonal
102524 (S-K10EFT2TL-DC), 102525 (S-K10EFT2TL-DT) evolution 2; 105448 (S-K10RFT2TL-RT), 105449 (S-K10RFT2TL-RC) evolution 2 hexagonal

Akrapovic Racing & Evolution Exhaust System for the Kawasaki ZX 10 R (2004, 2005)

Akrapovic Exhaust System Technology copyright 2006, all rights reserved



CARBON-FIBER CHASSIS HANGING BRACKET IS OPTIONAL



ANTI-SEIZING GREASE (EVOLUTION LINE ONLY)



CARBON-FIBER MUFFLER CLAMP

Product code: 102519 (S-K10R2L-C), 102520 (S-K10R2L-T) racing
102515 (S-K10RFT2TL-C), 102497 (S-K10RFT2TL-T) evolution;
102524 (S-K10EFT2TL-DC), 102525 (S-K10EFT2TL-DT) evolution 2

Akrapovic Racing & Evolution Exhaust System for the Kawasaki ZX 10 R (2004, 2005)



Akrapovic Exhaust System Technology copyright 2006, all rights reserved

Road
Program

Product code: 102519 (S-K10R2L-C), 102520 (S-K10R2L-T) racing
102515 (S-K10RFT2TL-C), 102497 (S-K10RFT2TL-T) evolution;
102524 (S-K10EFT2TL-DC), 102525 (S-K10EFT2TL-DT) evolution 2

Akrapovic Racing & Evolution Exhaust System for the Kawasaki ZX 10 R (2004, 2005)



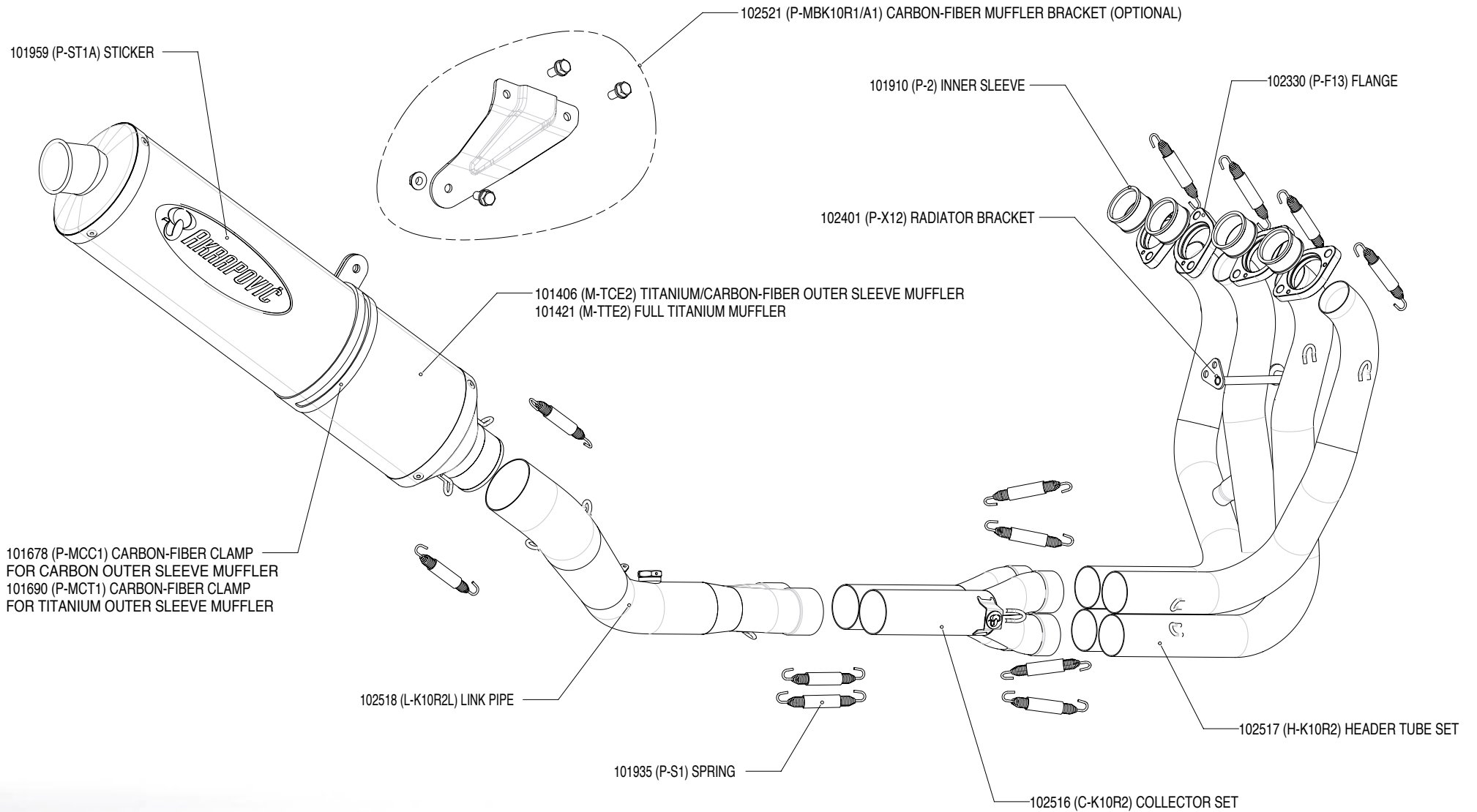
Akrapovic Exhaust System Technology copyright 2006, all rights reserved

Road Program

Product code: 102519 (S-K10R2L-C), 102520 (S-K10R2L-T) racing
102515 (S-K10RFT2TL-C), 102497 (S-K10RFT2TL-T) evolution;
102524 (S-K10EFT2TL-DC), 102525 (S-K10EFT2TL-DT) evolution 2

Akrapovic Racing & Evolution Exhaust System

for the Kawasaki ZX 10 R (2004, 2005)



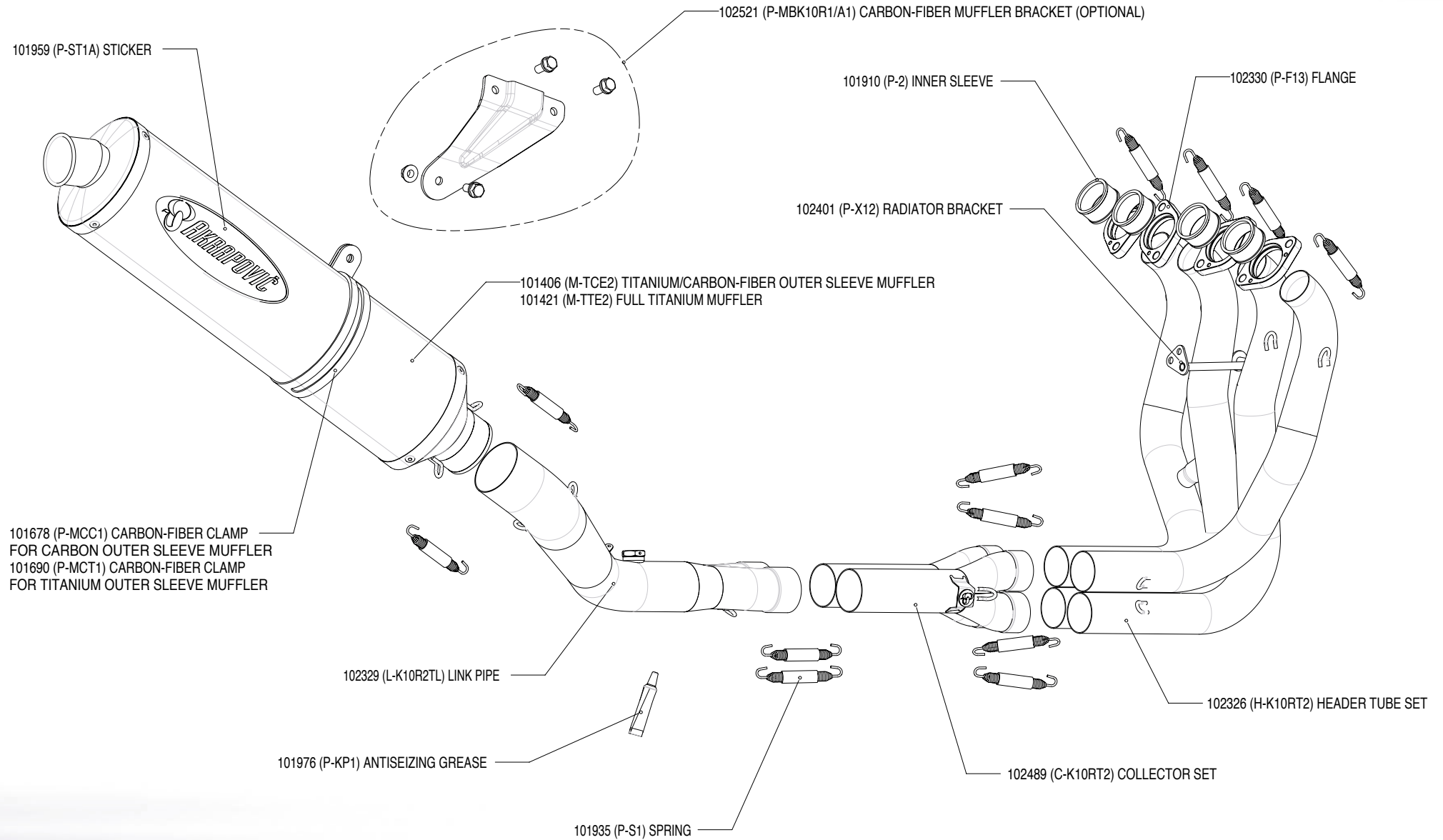
Akrapovic Exhaust System Technology copyright 2006, all rights reserved

Road Program

Product code: 102519 (S-K10R2L-C), 102520 (S-K10R2L-T) racing

Akrapovic Racing & Evolution Exhaust System

for the Kawasaki ZX 10 R (2004, 2005)



Akrapovic Exhaust System Technology copyright 2006, all rights reserved

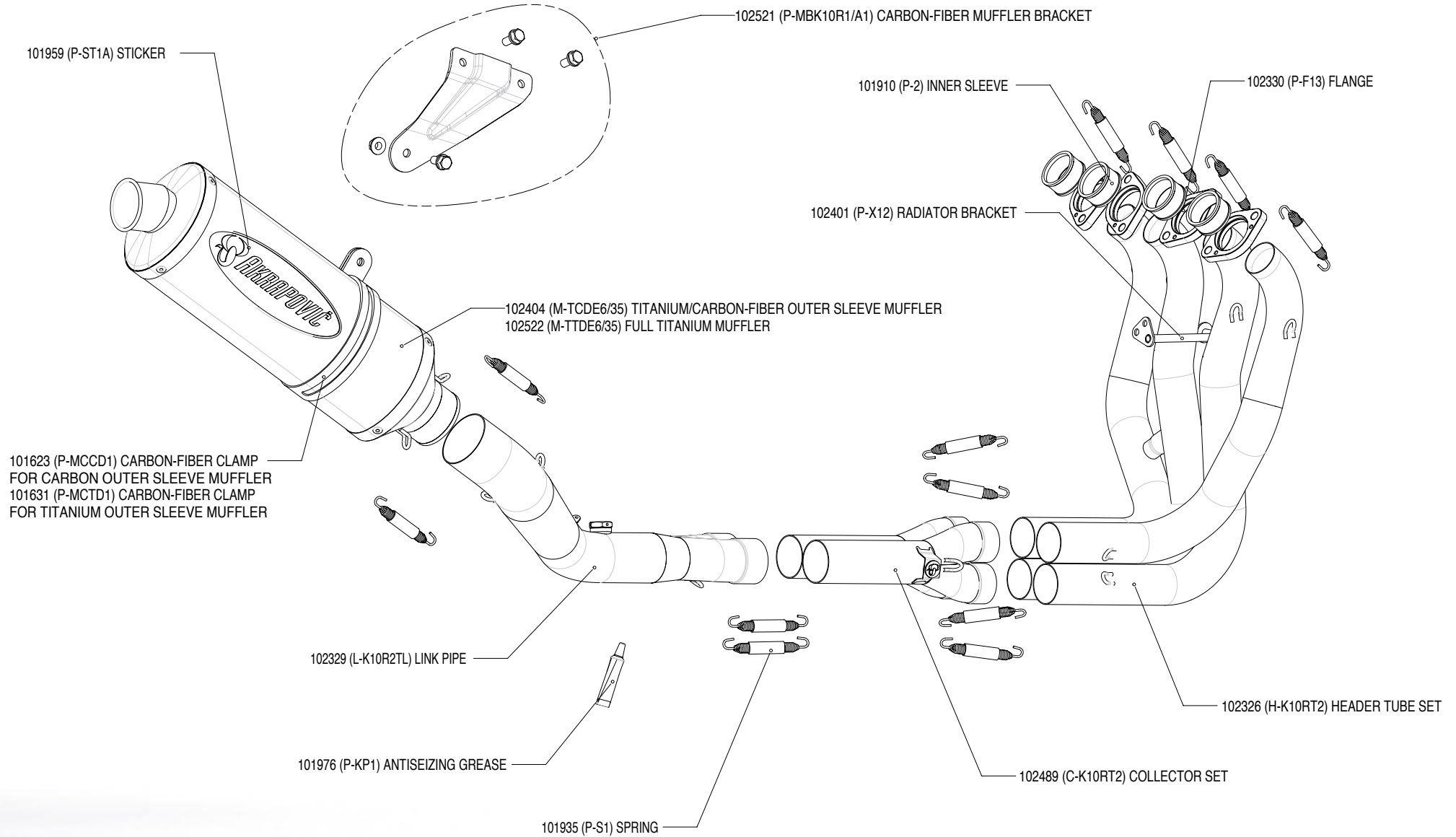
Road Program

Product code: 102515 (S-K10RFT2TL-C), 102497 (S-K10RFT2TL-T) evolution;



Akrapovic Racing & Evolution Exhaust System

for the Kawasaki ZX 10 R (2004, 2005)



Akrapovic Exhaust System Technology copyright 2006, all rights reserved

Road Program

Product code: 102524 (S-K10EFT2TL-DC), 102525 (S-K10EFT2TL-DT) evolution 2



Akrapovic Racing & Evolution Exhaust System for the Kawasaki ZX 10 R (2004, 2005)



HEXAGONAL
SHAPED MUFFLER



HYDRO
FORMING



CARBON-FIBER CHASSIS HANGING
BRACKET IS OPTIONAL



CARBON-FIBER
MUFFLER CLAMP

Road
Program

Product code: 105444 (S-K10R2L-ZT), 105445 (S-K10R2L-ZC) racing hexagonal
105446 (S-K10RFT2TL-ZT), 105447 (S-K10RFT2TL-ZC) evolution hexagonal

Akrapovic Racing & Evolution Exhaust System for the Kawasaki ZX 10 R (2004, 2005)

Akrapovic Exhaust System Technology copyright 2006, all rights reserved



Road
Program

Product code: 105444 (S-K10R2L-ZT), 105445 (S-K10R2L-ZC) racing hexagonal
105446 (S-K10RFT2TL-ZT), 105447 (S-K10RFT2TL-ZC) evolution hexagonal

Akrapovic Racing & Evolution Exhaust System for the Kawasaki ZX 10 R (2004, 2005)

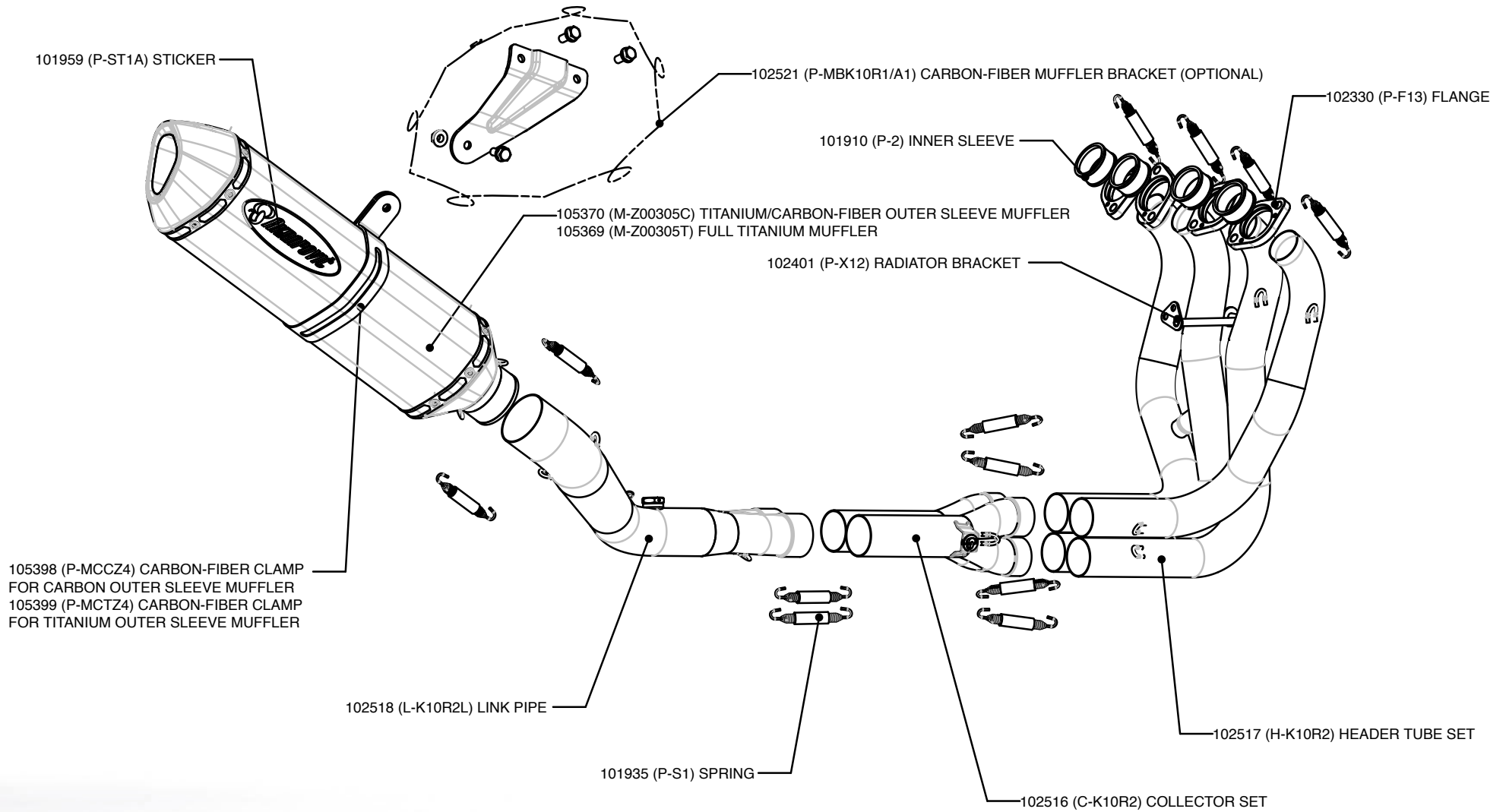


Akrapovic Exhaust System Technology copyright 2006, all rights reserved

Road
Program

Product code: 105444 (S-K10R2L-ZT), 105445 (S-K10R2L-ZC) racing hexagonal
105446 (S-K10RFT2TL-ZT), 105447 (S-K10RFT2TL-ZC) evolution hexagonal

Akrapovic Racing & Evolution Exhaust System for the Kawasaki ZX 10 R (2004, 2005)



Akrapovic Exhaust System Technology copyright 2006, all rights reserved

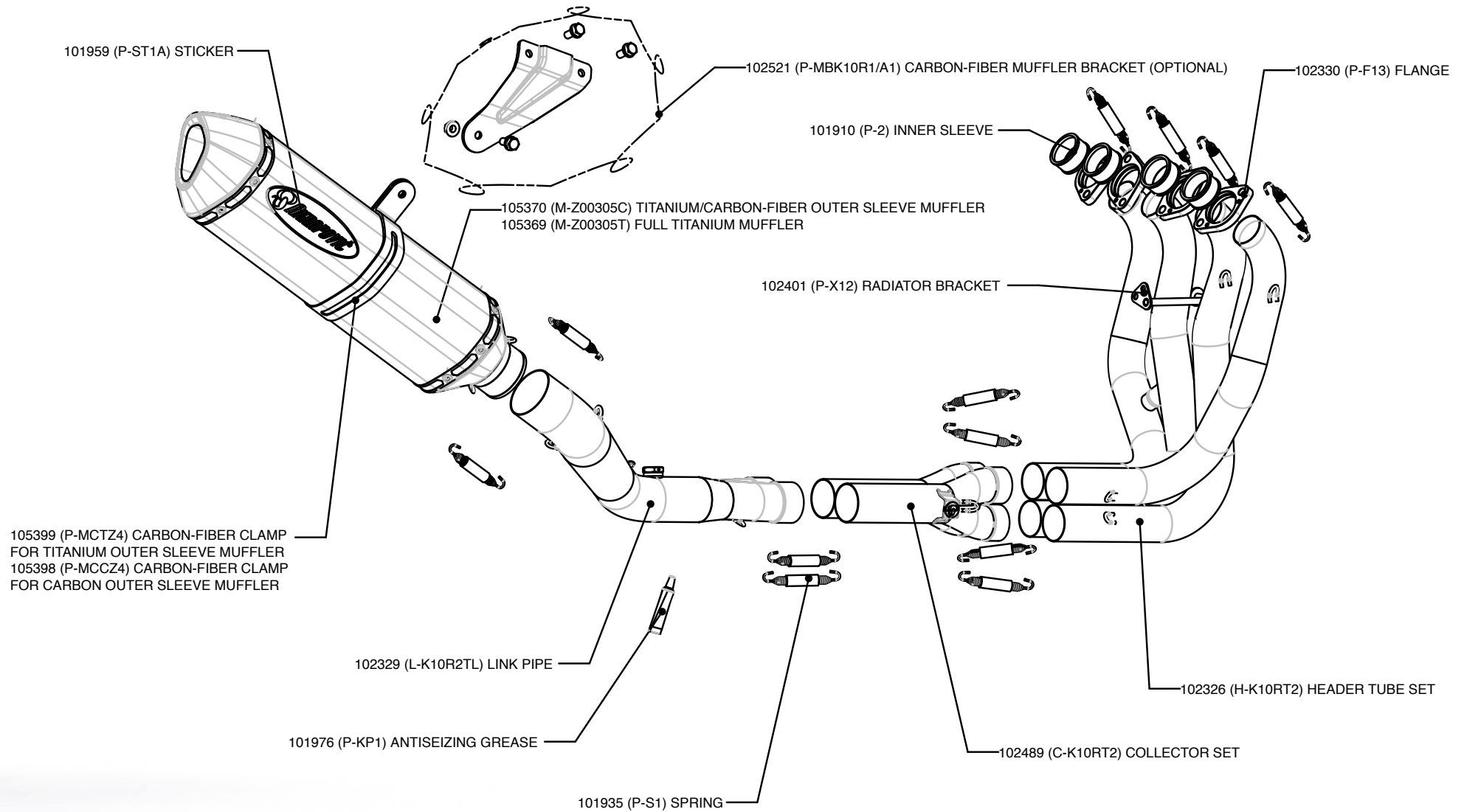
Road Program

Product code: 105444 (S-K10R2L-ZT), 105445 (S-K10R2L-ZC) racing hexagonal



Akrapovic Racing & Evolution Exhaust System

for the Kawasaki ZX 10 R (2004, 2005)



Akrapovic Exhaust System Technology copyright 2006, all rights reserved

Road Program

Product code: 105446 (S-K10RFT2TL-ZT), 105447 (S-K10RFT2TL-ZC) evolution hexagonal

Akrapovic Racing & Evolution Exhaust System for the Kawasaki ZX 10 R (2004, 2005)



HEXAGONAL
SHAPED MUFFLER



HYDRO
FORMING



CARBON-FIBER CHASSIS HANGING
BRACKET IS OPTIONAL



ANTI-SEIZING GREASE
(EVOLUTION LINE ONLY)



CARBON-FIBER
MUFFLER CLAMP

Product code: 105448 (S-K10RFT2TL-RT), 105449 (S-K10RFT2TL-RC) evolution 2 hexagonal

Akrapovic Racing & Evolution Exhaust System for the Kawasaki ZX 10 R (2004, 2005)



Akrapovic Exhaust System Technology copyright 2006, all rights reserved

Road
Program

Product code: 105448 (S-K10RFT2TL-RT), 105449 (S-K10RFT2TL-RC) evolution 2 hexagonal

Akrapovic Racing & Evolution Exhaust System for the Kawasaki ZX 10 R (2004, 2005)



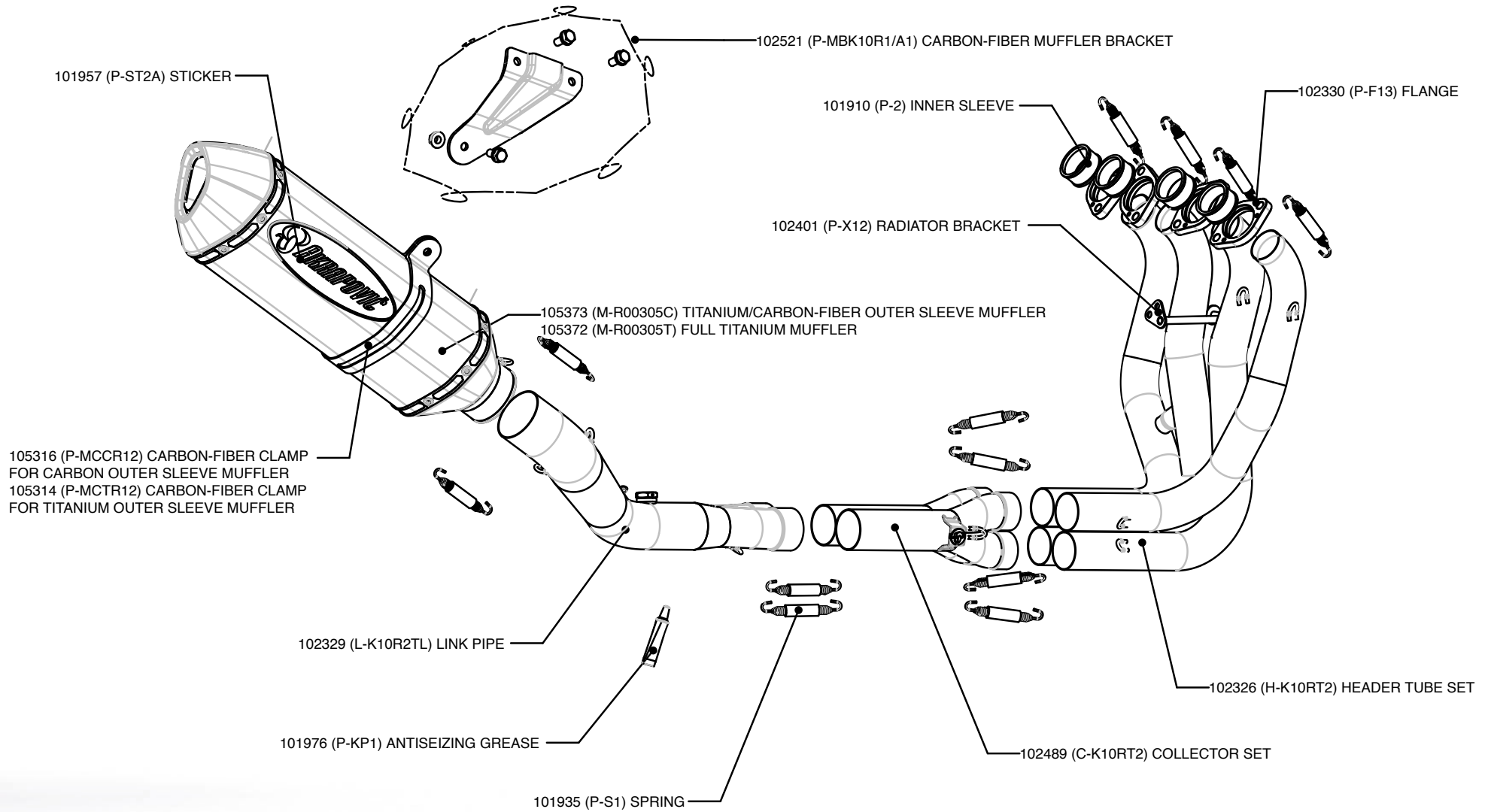
Akrapovic Exhaust System Technology copyright 2006, all rights reserved

Road Program

Product code: 105448 (S-K10RFT2TL-RT), 105449 (S-K10RFT2TL-RC) evolution 2 hexagonal

Akrapovic Racing & Evolution Exhaust System

for the Kawasaki ZX 10 R (2004, 2005)



Akrapovic Exhaust System Technology copyright 2006, all rights reserved

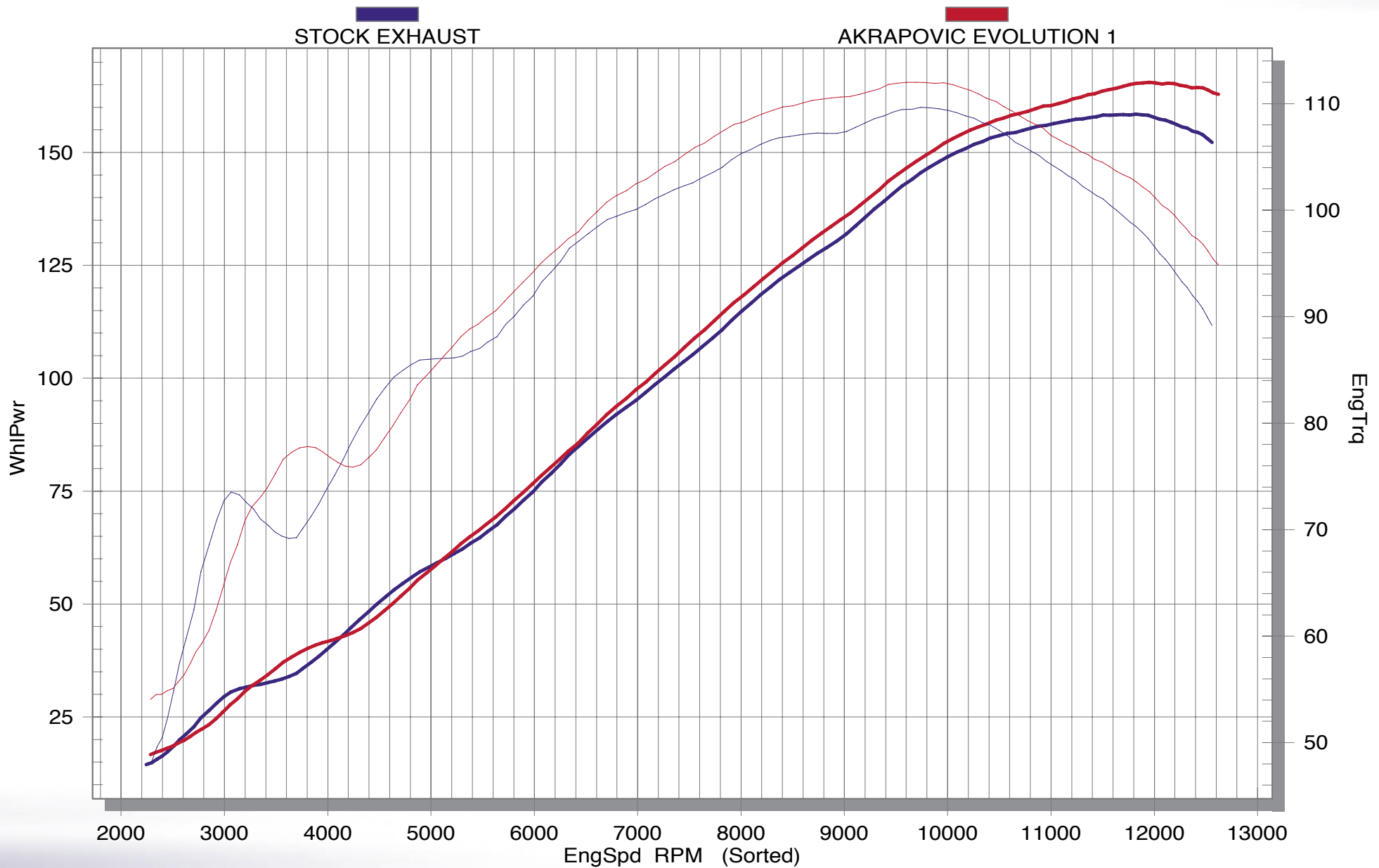
Road Program

Product code: 105448 (S-K10RFT2TL-RT), 105449 (S-K10RFT2TL-RC) evolution 2 hexagonal



Akrapovic Racing & Evolution Exhaust System

for the Kawasaki ZX 10 R (2004, 2005)



Akrapovic Exhaust System Technology copyright 2006, all rights reserved

Road Program

Product code: 102519 (S-K10R2L-C), 102520 (S-K10R2L-T) racing; 105444 (S-K10R2L-ZT), 105445 (S-K10R2L-ZC) racing hexagonal
 102515 (S-K10RFT2TL-C), 102497 (S-K10RFT2TL-T) evolution; 105446 (S-K10RFT2TL-ZT), 105447 (S-K10RFT2TL-ZC) evolution hexagonal
 102524 (S-K10EFT2TL-DC), 102525 (S-K10EFT2TL-DT) evolution 2; 105448 (S-K10RFT2TL-RT), 105449 (S-K10RFT2TL-RC) evolution 2 hexagonal

