



Racing Line (Titanium)

Product code: **S-K6R7-HT**

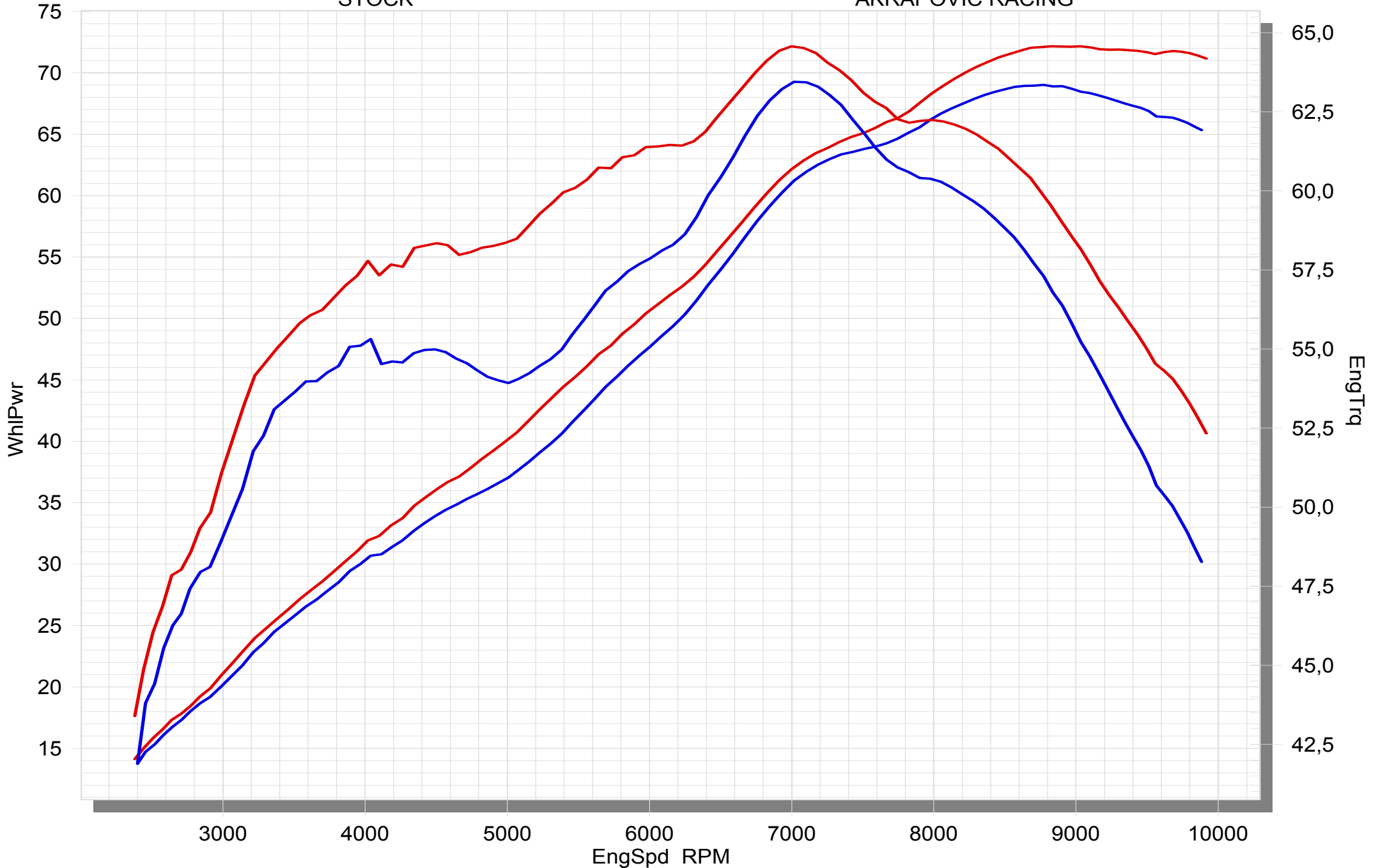
The Akrapovič Racing system is designed for riders who demand maximum performance. The Racing system is lighter compared to the stock exhaust system and features exceptional production quality, hi-tech materials, and, of course, increased engine performance combined with pure racing sound output. This system is designed for racing purposes only.

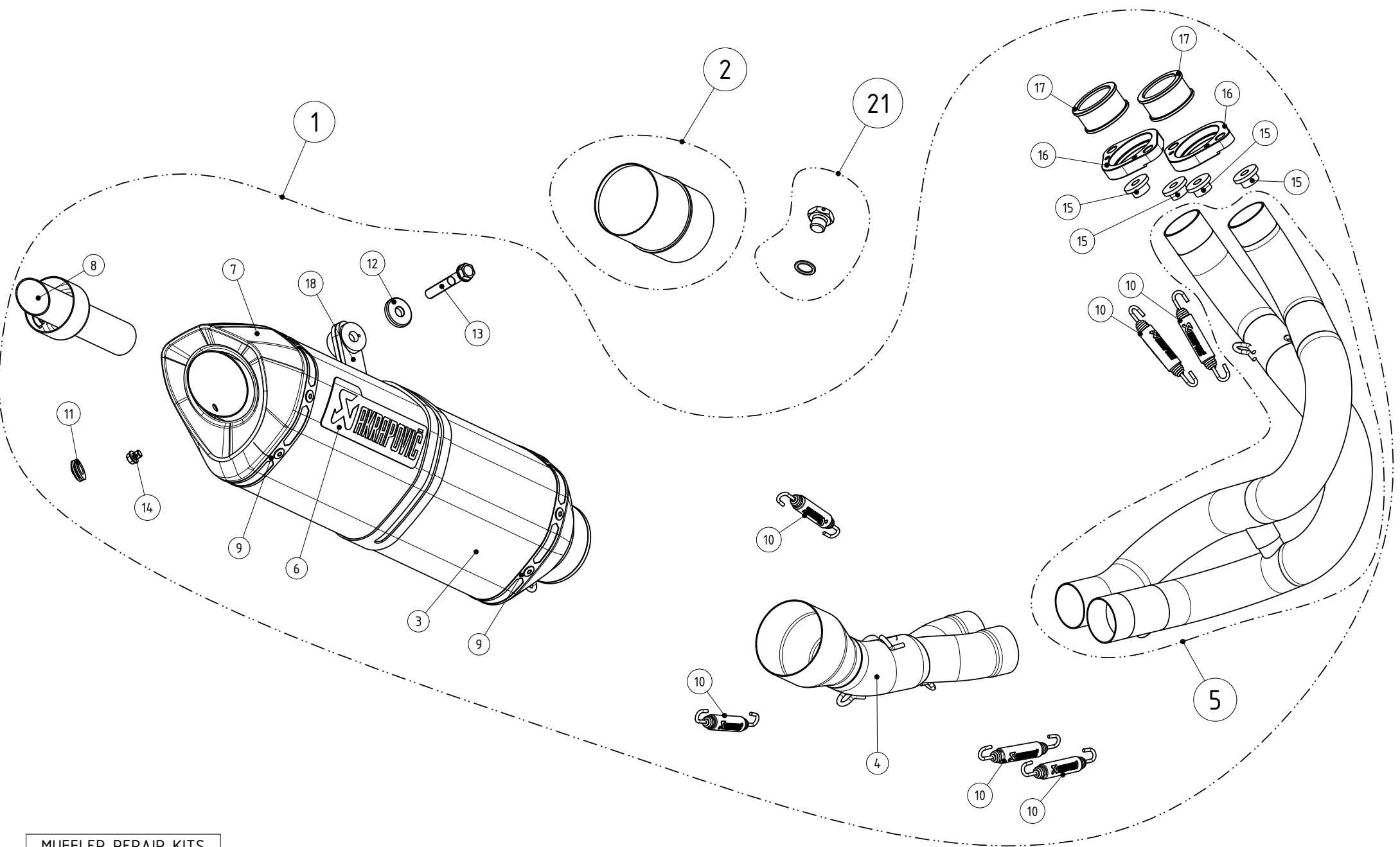
TECHNICAL DATA	UNIT	STOCK	AKRAPOVIČ	DIFFERENCE
maximum power	kW	50.7 at 8770 rpm	53.1 at 8820 rpm	+ 3.8 at 9560 rpm
	HP (m)	69 at 8770 rpm	72.2 at 8820 rpm	+ 5.1 at 9560 rpm
	HP (i)	68.1 at 8770 rpm	71.2 at 8820 rpm	+ 5 at 9560 rpm
maximum torque	Nm	63.4 at 7020 rpm	64.6 at 7000 rpm	+ 4.4 at 5000 rpm
	lb-ft	46.8 at 8770 rpm	39.2 at 8820 rpm	+ 2.8 at 9560 rpm
weight	kg	8	4.1	- 3.9
	lb	17.6	17.6	- 8.6
static noise level	dB	92	92	0

KAWASAKI ER-6 n/f

 STOCK

 AKRAPOVIC RACING





MUFFLER REPAIR KITS	
REPACK	19
SLEEVE	20

WARNING! EC TYPE APPROVAL IS VALID ONLY WHEN OPTIONAL CATALYST IS INSTALLED!

No.	SALES CODE	DESCRIPTION	QTY.
1	S-K6R7-HT	racing system	1
2	P-KAT-036	catalyst SS	1
3	M-HZ05502T	muffler	1
4	L-K6R7	link pipe SS	1
5	H-K6R7	header SS	1
6	P-HST2AL	sticker	1
7	V-EC173	end cap CA	1
8	V-TUV122	insert SS	1
9	P-TT27	belt TI for TI sleeve	2
10	P-S1	spring	6
11	P-GUV004	rubber insert	1
12	P-DR7	spacer bushe AL	1
13	P-FB23	bolt	1
14	P-FB56	bolt	1
15	P-FN12	nut	4
16	P-F38	flange AL	2
17	P-S6	inner sleeve SS	2
18	P-MCTZ36	muffler clamp CA	1
19	P-RPCK26	muffler repack kit	1
20	P-RKS323ZT40	muffler sleeve kit	1
21	P-LBSB4	lambda plug	1