



Ducati Diavel

SLIP-ON (EC Type approval) EXHAUST SYSTEM

The Akrapovič Slip-On exhaust system is designed for riders who do not want to make expensive and major modifications to their stock exhaust system. However, the Hexagonal muffler delivers great looks as well as increased performance for the Diavel. The Akrapovič Slip-On system is also EC Type approved.

PERFORMANCE

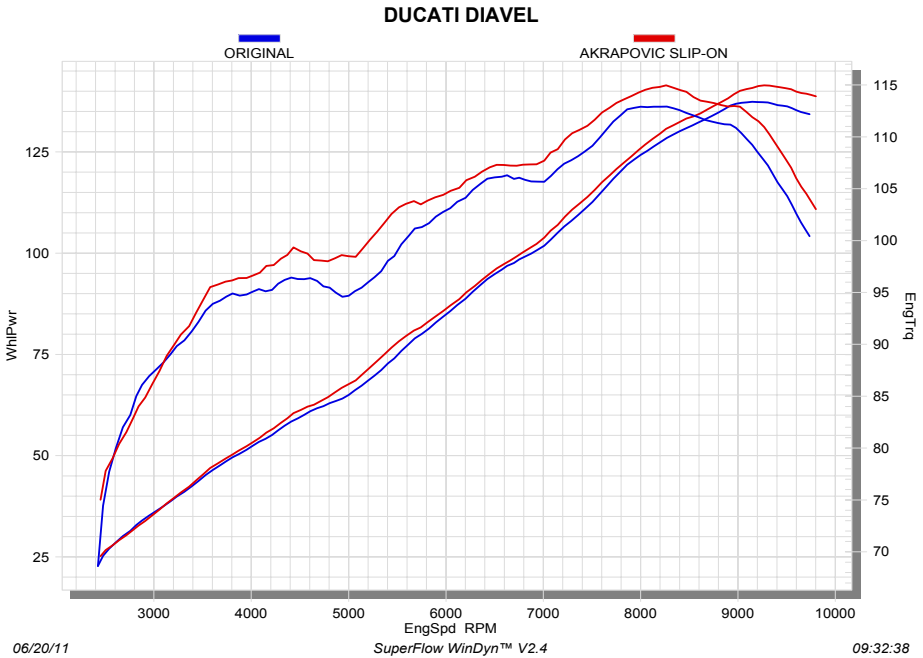
Measurements of the Akrapovič Slip-On system on the Ducati Diavel (without muffler insert):

Power & Torque:
The Akrapovič Slip-On exhaust system increases your engine power and its torque at practically every rpm. Especially from 3500 rpm on, the Akrapovič Slip-On exhaust system adds an increase in power, all the way up to the top of the rpm range.

	PERFORMANCE		
	stock	AKRAPOVIC	max. increased power
max. rear wheel power HP / rpm (measured on SuperFlow Cyle Dyn)	137.4 / 9150	141.5 / 9250	4.4 / 9400

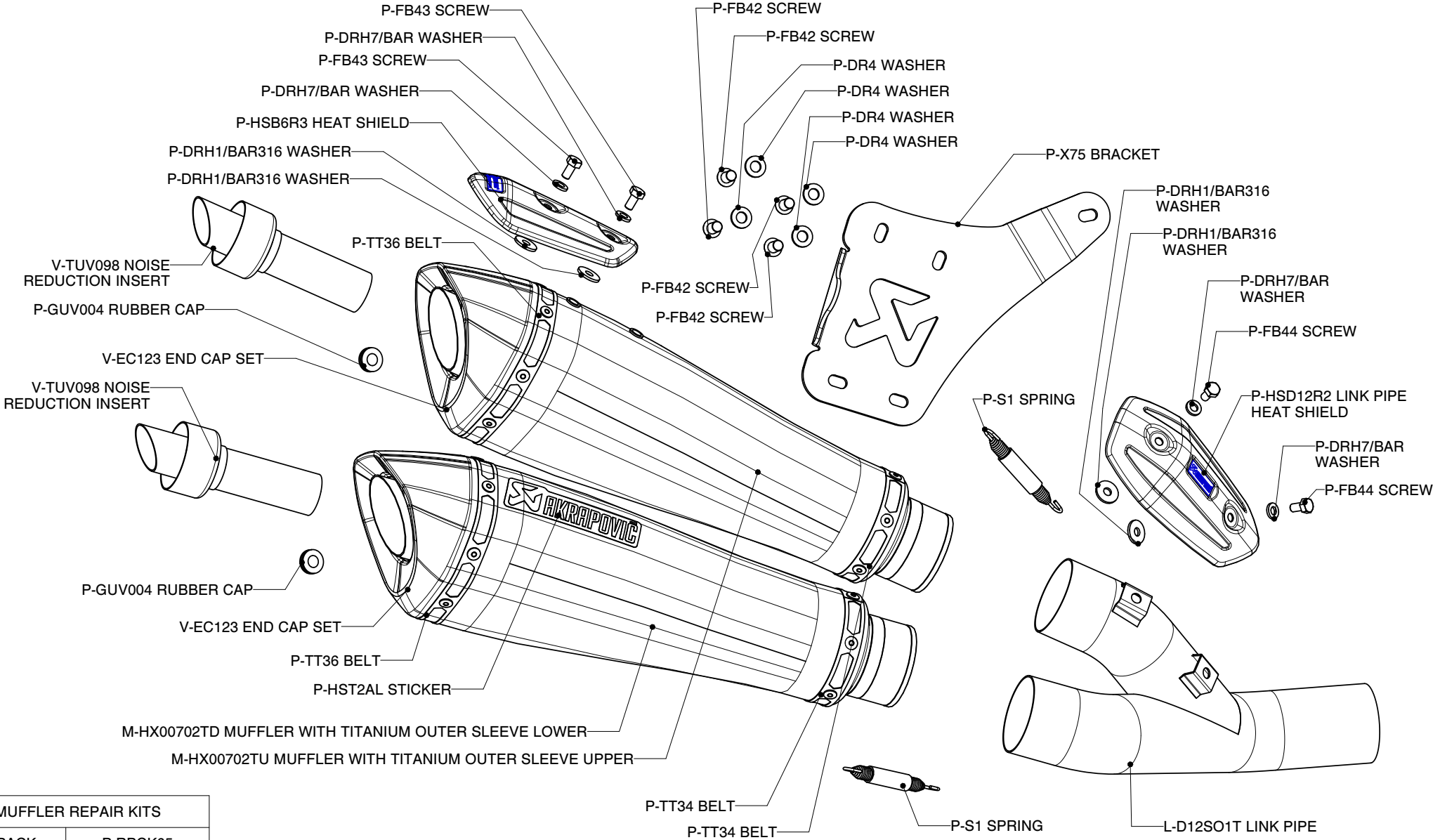
	ADDITIONAL DATA				
	stock	AKRAPOVIC		difference	
	7	SS link pipe	TITANIUM link pipe	stock - S.S.	stock - TITANIUM
weight comparison (kg)		-	5.2	-	1.8

noise measurements (dB / rpm)	stock	AKRAPOVIC
	101 / 4750	101 / 4750
EC Type approval	YES	



Technical specifications of Akrapovic exhaust systems and related products subject to change without notice.

DUCATI DIAVEL, Partial exhaust system / Slip-ON line / EC Type approval
Product code: S-D12SO2-HXT



MUFFLER REPAIR KITS	
REPACK	P-RPCK65
Ti SLEEVE UPPER	P-RKS313XT32
Ti SLEEVE LOWER	P-RKS314XT32